

# M/Y IRIMARI



Ultimate enjoyment!

## M/Y IRIMARI- 10 reasons why you will not resist her:

- Majestic ocean-going megayacht, with transoceanic range and an elegant exterior of the well-known designer Espen Oino International.
- Ultimate comfort at sea, for cruising and memorable entertainment, with a range of 6,000 nautical miles.
- Stabilizers ensure relaxed cruising and smooth anchoring at all times.
- 685m<sup>2</sup> of deck space, featuring four exterior decks with another water-level beach deck once the transom is opened.
- Impressive leisure and high end entertainment facilities make her the ideal charter yacht for socialising and entertaining with family and friends.
- The sun deck, with its large rectangular spa pool (4m x 3m x 0.9m) nicely adjacent to a wet bar, is the ideal area to enjoy drinks whilst sunbathing, or under the starry night sky when entertaining in style.
- The upper saloon on the bridge deck features a cinema with a 3m video wall and an interactive games room.
- Generous accommodation on board comprises of six cabins for twelve guests, cared by a company of 18 crew members to ensure a relaxed luxury yacht experience.
- Full beam Master suite, with life-size portholes on either side and an expansive bath area.
- Besides offering an impressive selection of water toys, the yacht also is a RYA training centre to issue guests a PWC Certification and has a dinghy and kayak instructor on board.



# M/Y IRIMARI – Cruising & at anchor





# M/Y IRIMARI – Flybridge deck & sun deck





# M/Y IRIMARI – Sun deck & lounge on the sun deck





# M/Y IRIMARI – Dining area on the bridge deck & main deck



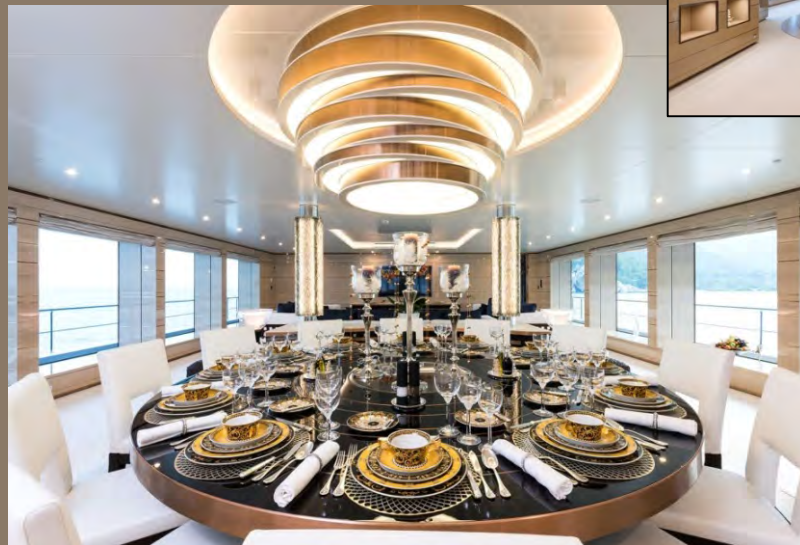


# M/Y IRIMARI – Upper saloon & cinema lounge on the bridge deck



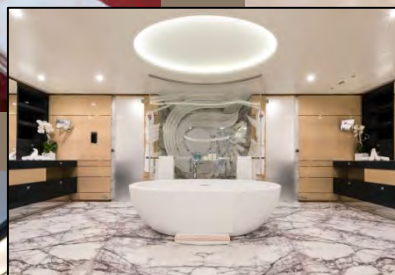


# M/Y IRIMARI - Main saloon & dining area on the main deck





# M/Y IRIMARI – Master suite on the main deck



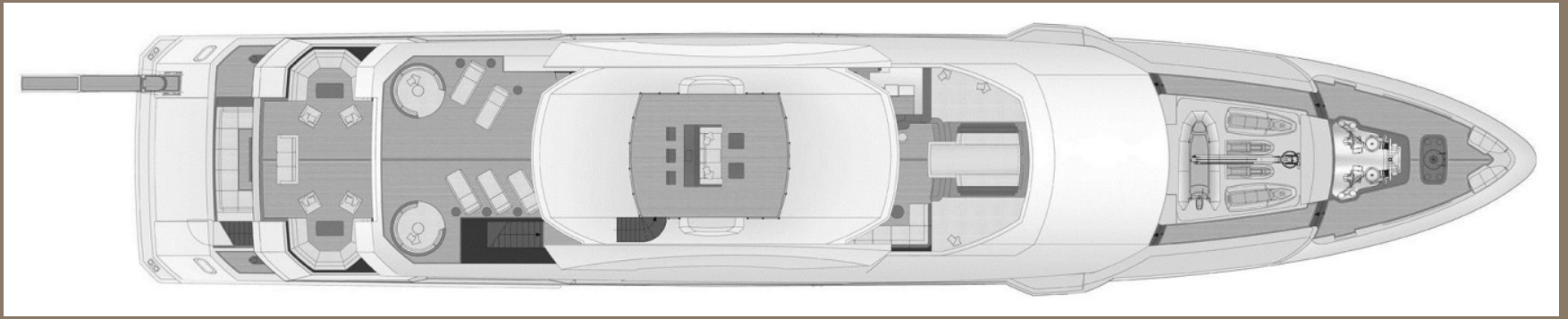


# M/Y IRIMARI – VIP cabin on main deck & guest cabin on lower deck

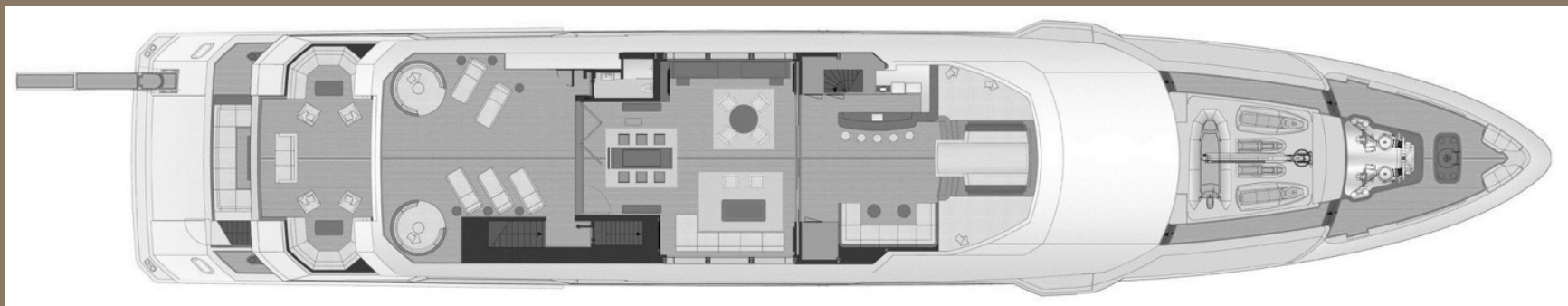




# M/Y IRIMARI – Layout flybridge deck

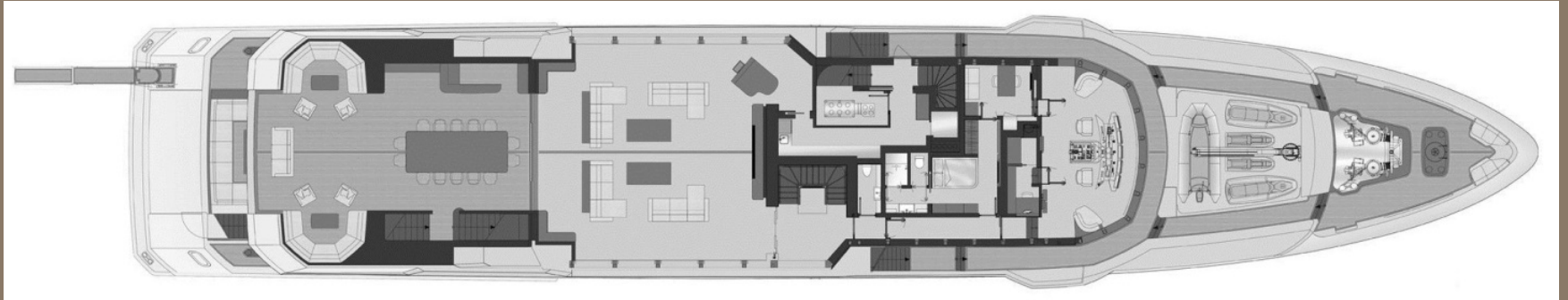


# M/Y IRIMARI – Layout sun deck

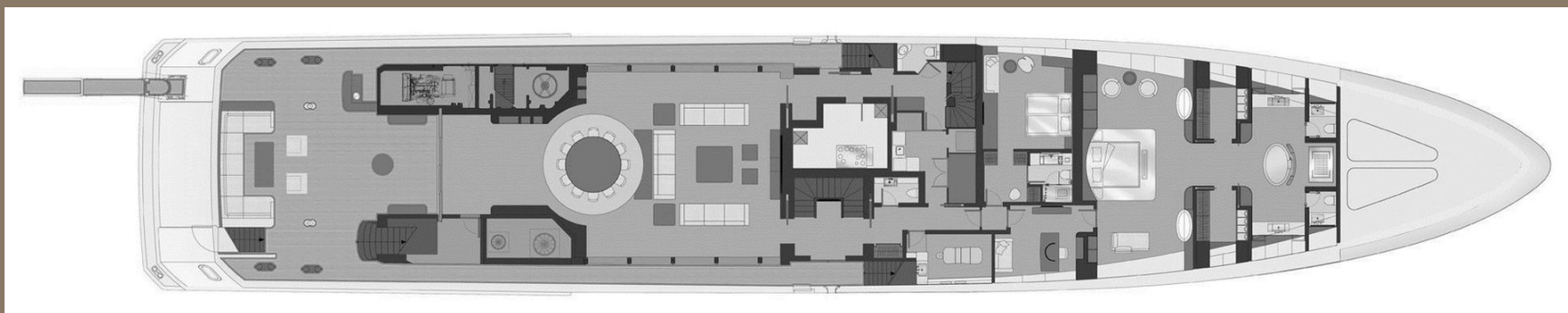




# M/Y IRIMARI – Layout bridge deck



# M/Y IRIMARI – Layout main deck





# M/Y IRIMARI – Layout lower deck



# M/Y IRIMARI – Specifications

Length	63.10m / 207'
Beam	11,50m / 38'
Draft	3,40m / 11'
Year built	2015
Builder	Sunrise Yachts
Naval Architect	Unique Yacht Design
Exterior Designer	Espen, Øino International
Interior Designer	Focus Yacht Design
Hull Construction	Steel
Hull Configuration	Full displacement

Number of crew	Captain + 17 crew
Total guests, sleeping	12
Total guests, cruising	12
Total guests, in port	150
Number of cabins	6
Cabin Configuration	4 double and 2 twin

## Guest accommodation

Full beam Master suite with life-size portholes, king-size bed (200cm x 235cm), private office and his and hers walk-in closet on either side. Two sliding doors open to a huge bath area (20m<sup>2</sup>) with enormous rainfall shower (2m<sup>2</sup>), free standing hot tube and his and hers toilet. / VIP cabin with queen-size bed (180cm x 205cm), life-size portholes, en suite bath with rainfall shower / Master suite can be converted together with VIP cabin into an apartment / Starboard 2 double bed cabins with queen-size bed (175cm x 205cm), working desk, en suite bath with rainfall shower. / Port 2 guest cabins with two single beds (90cm x 205cm), working desk, en suite bath with rainfall shower. / Both aft guest cabins, one twin and one double, conveniently transform into a large VIP cabin with saloon and sleeping room.

## Tender & toys

8.5m custom limousine tender / 7m Novurania LX sport tender / 2 x seadoo GTX LTD iS 260 / 2 x seabob F5S / 2 x Yamaha Superjet stand up jetski / 2 x wakeboards / 1 x water skis / 2 x inflatable tube / 1 x inflatable kick flip / 1 x inflatable airstream/ 1 x inflatable tornado / 2 x inflatable stand up paddle board / 2 x kayaks (2-seater) / 1 x inflatable waterslide / 1 x inflatable sea-pool (5m x 4m inside)/ RYA Training Center to issue guests a PWC Certification / PWC instructor and dinghy and kayak instructor / rectangular spa pool (4m x 3m x 0.9m) with water jet / BBQ / 6 bars / baby-piano in the cinema lounge on bridge deck / transom door, with integrated hydraulic stairway, converts into water-level beach lounge, fitted with huge shower and TV / Finn sauna / gym with an openable terrace to the sea, bathroom and the following equipment: 1 Vibrogym Evolution with UBD (white), 1 NordicTrack E9.2 Elliptical, 1 Technogym Myrun treadmill.

## Audiovisual equipment

Satellite TV including Sky TV (depending on area) / video server with more than 1.000 movies / 4 TV 's in inside area, 1 TV for aft deck on sun deck, table touch screen on sun deck / 98" TV in cinema lounge and interactive games room on bridge deck / control tablets in all cabins and saloons / Airplay throughout the yacht through local intranet / Satellite internet / Electricity voltage 230V / 4G wifi system