

SIREN





SIREN: OF OR PERTAINING TO A SIREN; BEWITCHING, LIKE A SIREN; FASCINATING; ALLURING; AS, A SIREN SONG

SIREN

SIREN IS AN EXQUISITE BLEND OF ELEGANCE AND LUXURY. COOL, MUTED TONES MEET SLEEK, SOPHISTICATED LINES. THE FINEST FINISHES OF FRENCH OAK, MAPLE WITH INTRICATE GRAINS, SILK AND NATURAL STONE COMPLEMENT THE SPACIOUS INDOOR AND OUTDOOR LIVING AREAS AND LUXURIOUS ACCOMMODATION. LAUNCHED IN 2008 FROM THE NOBISKRUG SHIPYARD, SIREN IS A 73.5M MOTOR YACHT WITH A TIMELESS AND ELEGANT PROFILE; THE EMBODIMENT OF FUNCTION AND FORM IN PERFECT ACCORD.





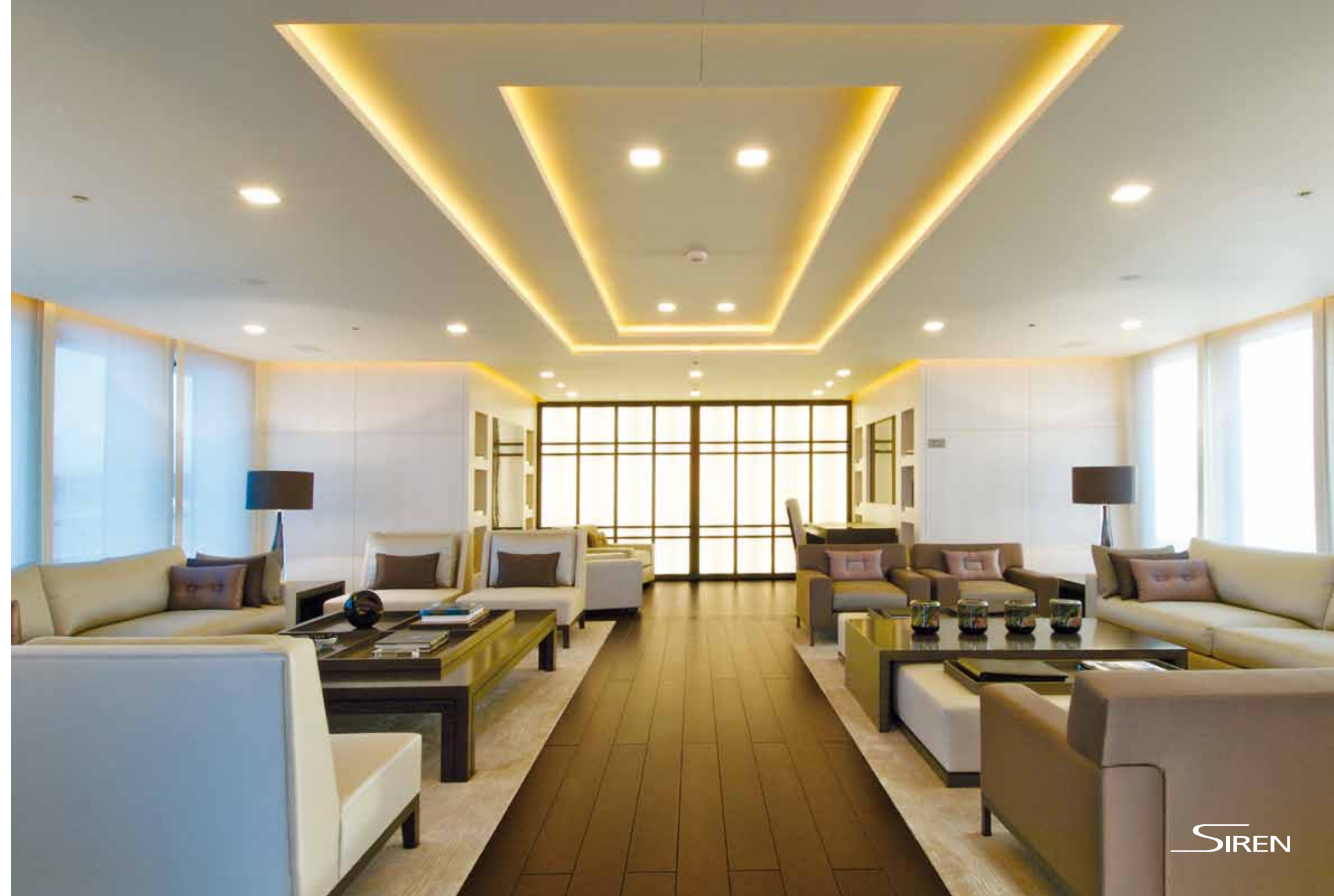
MAIN DECK AFT



A PERFECT SENSE OF PLACE

THE MAIN SALON IN SIREN IS BEAUTIFULLY APPOINTED, COMBINING A STATELY AESTHETIC WITH A WELCOMING SENSE OF PLACE. FORM SUPPORTS FUNCTION AT EVERY STEP.

AT 18 METRES LONG BY 9 METRES AT ITS WIDEST, SPACE IS GENEROUSLY APPORTIONED BETWEEN DINING ROOM WITH CAPACITY FOR 22 DINERS AND SALON LIBRARY. CONCEALED MACASSAR SHOJI SCREENS GLIDE SEAMLESSLY INTO PLACE AT A TOUCH, WHILE FLOOR-TO-CEILING BAY WINDOWS MAINTAIN THE WIDER SENSE OF PLACE AND PERSPECTIVE. THE SALON'S STRONG LINES AND CRISP ANGLES COUNTERPOINT THE SEA VISTAS PERFECTLY.





THE QUALITY OF LIGHT



LIGHT AND SPACE ARE THE HALLMARKS OF THE OWNER'S COMPARTMENT. CLEAN LINES AND SUBTLE ACCOUTREMENTS, SUCH AS THE PEARL EMBROIDERED BEDSPREAD AND CONCEALED RECEPTACLES GIVE IT A STYLISH EMINENCE.

AND THIS IS A ROOM THAT REVELS IN ITS SECRETS. THE ADJOINING STUDY WALL SWINGS OPEN TO REVEAL A BALCONY, AND WITHIN THE OPPOSITE WALL, A FOLDAWAY DOUBLE BED AFFORDING A SPECTACULAR OPEN AIR SLEEPING PLACE.

MASTER BEDROOM

BATHROOM

OFFICE

BATHROOM

BALCONY

BEDROOM CONVERSION

WARDROBE



GUEST CABIN

GUEST CABIN

SUPERIOR CABIN

VIP CABIN

GUEST CABIN

ALL FOUR GUEST ROOMS SHARE THE SAME DEDICATION TO CLEAN LINES AND BEGUILING TEXTURES. EACH ROOM HAS ITS OWN UNIQUE CHARACTER AND STUNNING VIEWS.

THE SPACIOUS AFT ROOMS ON THE LOWER DECK FEATURE BLEACHED MAPLE WALLS AND LIMESTONE CLAD EN SUITES, WHILE THE SMALLER CABIN ON THE UPPER DECK FEATURES THE MOST EXPANSIVE VIEWS. ALL ROOMS FEATURE TELEVISIONS AND IPOD DOCKS, AS WELL AS CUSTOM LIGHT FITTINGS AND ACCESSORIES TO FIT THE MILIEU.





AFT DECK BAR

SIDE DECK

OUTDOOR CINEMA

EXTERNAL STAIRS TO DECK

OUTDOOR DINING



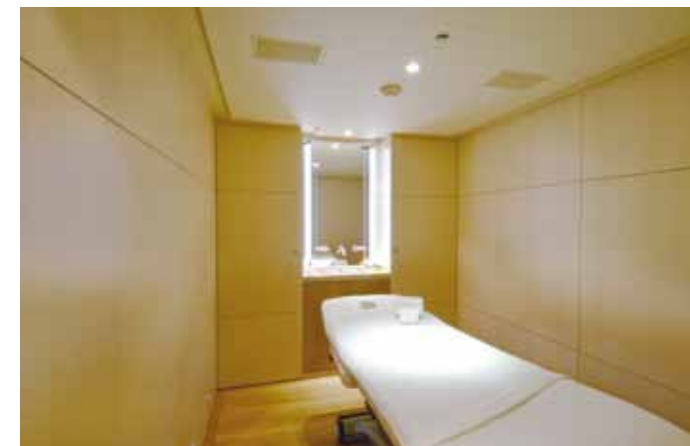


SKY LOUNGE

INDOOR CINEMA

BEACH CLUB

SPA



SENSORY HUB

THE SUNDECK COMBINES LIGHT HONEY COLOURED TEAK GRAIN WITH MIRROR-POLISHED STAINLESS STEEL BALUSTRADES AND SUMPTUOUS, CUSHIONED SURFACES AROUND A SPACIOUS, REFRESHING JACUZZI.

IN COMMON WITH SIREN'S PREVAILING AESTHETIC, A CAREFUL DEVOTION TO DESIGN SYMMETRY IS KEY. THE SIGHT LINE LEADS INEVITABLY TO THE BOW - TO THE HORIZON AND TO INFINITE POSSIBILITIES. FROM THIS VANTAGE POINT, THERE IS NOTHING TO IMPEDE THE FULL BEAUTY OF THE SKY; JUST THE GENTLE LAPPING OF WATER UNDER SUNLIGHT OR STARLIGHT.

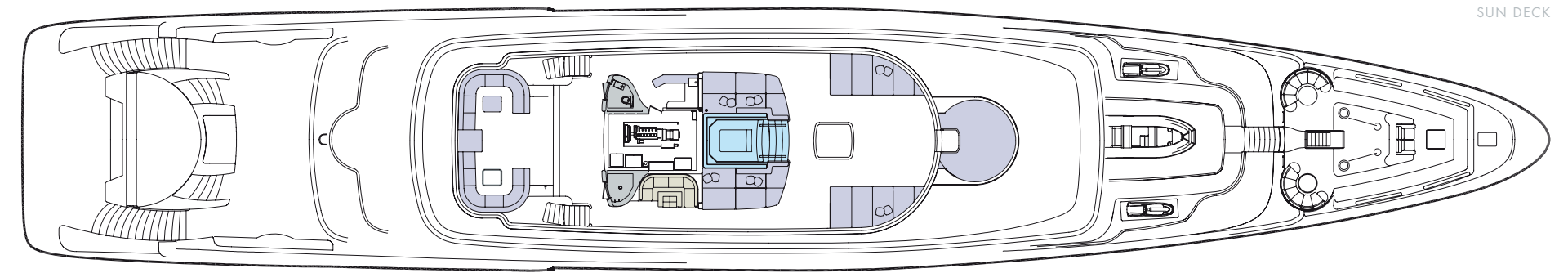




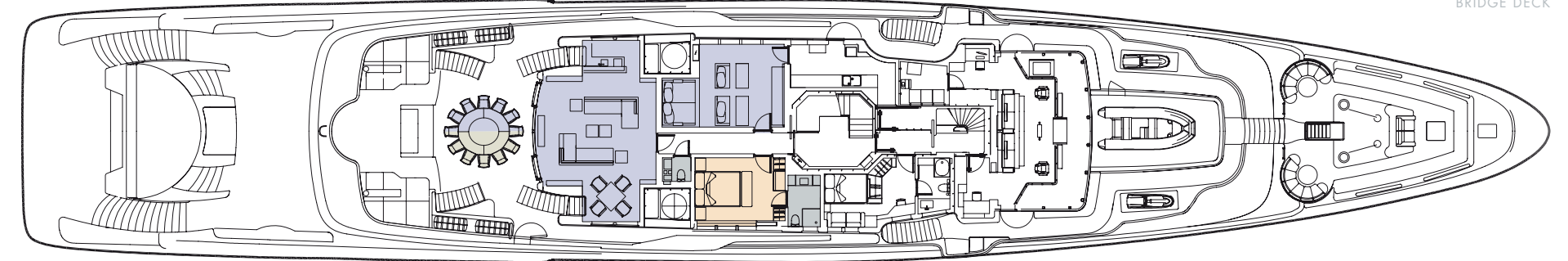
ELEVATING DESIGN

THE LIFT LOBBY IS A RICH CONFLUENCE OF LIGHT AND TEXTURE. SOFT LIGHT POOLS ON THE RICH FRENCH OAK FLOORS AND WALLS; IT BOUNCES OFF THE DAZZLING BLACK GLASS FRONTED LIFTS. THE RECESSED LIGHT FITTINGS ARE SUBTLE; THE LOBBY WARM AND INVITING.

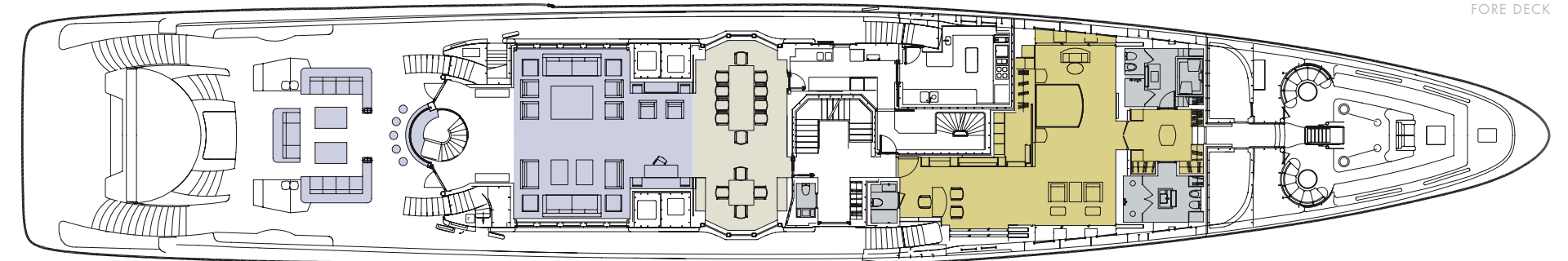
KEY	
	DINING
	LOUNGES - EXTERIOR, INTERIOR, CINEMA
	MASTER SUITE
	GUEST ACCOMMODATION
	JACUZZI
	BATHROOMS
	GYM/SPA AND BEACH CLUB



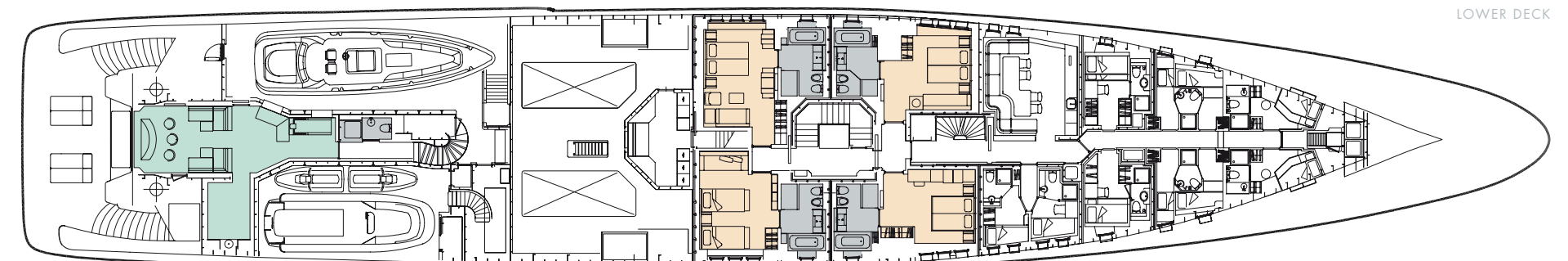
SUN DECK



BRIDGE DECK



FORE DECK



LOWER DECK



SPECIFICATION

LOA
73.53m (241ft 3in)

LWL
65.0m (213ft 3in)

BEAM (MAX)
12.55m (41ft 2in)

DRAFT (LOADED)
3.65m (12ft)

DISPLACEMENT
1,512 tonnes

GROSS TONNAGE
1,585

MAIN ENGINES
2 x 1760kW MTU 16V 4000
M60 diesels

GEARBOX
ZF

PROPELLERS
Piening, 5 blade, fixed pitch

SHAFTS
Piening

STEERING GEAR
Van Der Velden

EXHAUST SYSTEMS
Marquip

SPEED (MAX/CRUISE)
17.5/15 knots

FUEL CAPACITY
190,000 litres

RANGE AT 15/14 KNOTS
5,000nm/7,300nm

STABILISERS
Quantum 1500ZS/4, 4-fin zero speed

WINDLASSES
2 x 9-tonne Steen

BOWTHRUSTER
195KW Schottel

WATER CAPACITY
37,000 litres

WATERMAKERS
2 x Idromar, 20,000 litres per day

SEWAGE SYSTEM
Hamann

GENERATORS
2 x 252kW MAN D2876 IE 301
1 x 171kW MAN D2866 LXE 30

EMERGENCY GENERATOR
125kW MAN

MONITORING SYSTEM
Bjorge Moland

FIRE CONTROL SYSTEM
Siemens/Yok Novenco

AIR-CONDITIONING
Sick

COMMUNICATIONS SYSTEMS
Sailor, Sea Tel, Panasonic

NAVIGATION EQUIPMENT
Sperry, Furuno, Racal-Decca, B&G

INTERIOR FURNITURE
Fitz, Oldenburger

OWNERS AND GUESTS
12/16 - in master suite with double
pullman, 1 x VIP, 1 x twin cabin with
sofa bed & 3 x doubles cabins,
1 with sofa bed

CREW
17 - in 1 x double cabin,
5 x twin-bunked & 5 x single cabins

TENDERS
1 x 12m Chase, 1 x 7.5m Novurania,
1 x Nautica 5m rescue boat

CRANES
Hydromar

PASSERELLE
Hydromar

EXTERIOR PAINT
Awlgrip

CONSTRUCTION
Steel hull & steel/
composite superstructure

CONSULTANT ENGINEERS
777 Yacht Group Company

CLASSIFICATION
Germanischer Lloyd 100 A5,
CMCA, MC Y, AUT (UMS).
MCA, LY2 compliant

INTERIOR DESIGNER
Newcruise - Yacht Projects & Design

EXTERIOR STYLIST
Newcruise - Yacht Projects & Design

NAVAL ARCHITECT
SDC & Nobiskrug

BUILDER/YEAR
Nobiskrug/2008



SIREN

BEST
DISPLACEMENT
MOTOR YACHT
OF 1,300GT
TO 2,999GT
AT THE
WORLD
SUPERYACHT
AWARDS
2009

JUDGES'
COMMENTS

"THE ALL-ROUND
EXCELLENCE OF
SIREN MADE HER
A CLEAR WINNER"

BUILDER
NOBISKRUG GERMANY

LOA
73.53M (241FT 3IN)

YEAR
2008

BEAM
12.55M (41FT 2IN)

DESIGNER
NEWCRUISE

DRAFT (LOADED)
3.65M (12FT)

FLAG
CAYMAN ISLANDS

CONSTRUCTION
STEEL

ACCOMMODATION
12 GUESTS IN 6 STATEROOMS

ENGINES
2 X MTU 16V4000M60







SIREN

Captain – Thomas Graham

Scottish

Previous Yachts:

M/Y BACARELLA (60m)
M/Y SENSES (57m)
M/Y BIG CHANGE (40m)
M/Y NONI (30m)
M/Y KATRION (48m)
M/Y MAALANA (47.6m)
M/Y MAALANA STAR (36m)
M/Y LA VANETIA (38m)
M/Y SMOOTH OPERATORS (36m)
M/Y BLUE ALBACORE (32m)

Interests:

Sailing, rugby, golf and skiing.



Tom was born in Campbeltown on the west coast of Scotland. After completing grammar school Tom joined the Royal Navy for seven and a half years and then came into yachting in 1991 where he gained his Masters 3000 license. Tom is married with no children and spends his off time between Mallorca and Germany. Tom has worked on several yachts over the years and brings a wealth of knowledge and expertise on board SIREN.

First Officer – Dean Green

Australian

Previous Yachts:

M/Y CORAL ISLAND (70m)
M/Y SQUALO (40m)
M/Y PERLA BLU (50m)
M/Y LATITUDE (54m)

Interests:

Waterports and golf



Growing up on the doorstep of the Great Barrier Reef in Cairns, Australia, Dean has always had a natural affinity with the sea. Dean is an excellent swimmer having spent many years actively involved in surf lifesaving. An avid water sports enthusiast, Dean is proficient with all watercrafts and can happily assist you with any water sports requirements. This is Deans ninth year working on yachts and his first with SIREN, in that time he has travelled over 51,000 nautical miles crossing the Pacific, Atlantic and Indian oceans. Destinations include the Caribbean, Central America, South East Asia and the Seychelles. Dean enjoys football, playing golf and snowboarding.

Chef – Marcus Salmon

Australian

Previous Yachts:

M/Y TATOOSH (93m)

M/Y SILVER ZWEI (73m)

M/Y PACIFIC (85m)

Interests:

Fishing, snowboarding, fitness, reading,
travel, food and wine



Marcus has been a professional chef for over nine years and a head chef in yachting for the last four years. He has worked in highly rewarded restaurants including Cafe Du Marche in London and Comme in Melbourne and in all the various departments in the kitchen working his way up to lead positions. Marcus is a very creative and versatile chef and is now returning to SIREN after a two year break working as a relief chef on other yachts and furthering his experience and culinary knowledge. He is looking forward to a busy season on board SIREN ahead.

2nd Chef – Gordon Warne

South African

Previous Yachts:

M/Y EOL B (34m)

Interests/Languages:

Surfing, diving and travelling
Afrikaans



Gordon is a young enthusiastic chef with an eye for detail, with 10 years experience in a la carte style restaurants. He has developed many skills in menu planning, costing and kitchen management. He specialises in international cuisine, combining his knowledge of classic French, British, Indian and Thai cuisine, to create his own style of cooking, fresh, vibrant and elegant dishes. He likes to get on well with people and handle stressful situations with a positive sense of humor. Gordon is new to the yachting industry, and would like to see the world while working in this industry.

2nd Chef – Donna Milwidsky

South African

Previous yachts:

M/Y MOSAIC (27.6m)

Interests/Languages:

Food, Horse riding, ballet dancing,
tennis, reading and watching movies
Afrikaans



Donna was born and raised in Johannesburg and moved to Cape Town in 2011 to attend Silwood Kitchens Culinary School where she completed a three year Cordon Bleu Grande Diploma. She has worked in some of the top restaurants, hotels and catering companies in South Africa and specialises in patisserie. She is passionate about food and bringing the best to the table. Donna is thankful for what she does every day!

Chief Stewardess – Anna Green

German

Previous Yachts:

M/Y PERFECT PERSUASION (45m)
M/Y TATOOSH (93m)
M/Y LATITUDE (54m)

Interests/Languages:

Football, travelling and squash
German and English



Raised in Grenada, West Indies, Anna spent her childhood by the sea and has found a perfect field to combine her enthusiasm for travel, the ocean and hospitality on luxury yachts. After finishing a hotel management apprenticeship, Anna turned to the superyacht industry and has since worked on high profile yachts for the last five years. Anna performs her vocation with a passion and is committed to making your stay memorable and a thoroughly enjoyable experience.

2nd Stewardess – Kamila Sieradzka

Polish

Previous Yachts:

M/Y SHANDOR (50m)
M/Y ANDALE (50m)
S/Y MIRABELLA V (75m)

Interests/Languages:

Design, architecture, endurance sports
and fitness
Polish and English



Kamila's career in the superyacht industry started over 10 years ago and evolved from junior stewardess positions to yacht build interior consultant positions. During the years at sea, yachts have taken her to many beautiful, distant places and has given her the opportunity to work with some fantastic people. Kamila's interest in the superyacht industry is based on a desire to experience and be able to deliver customer service at the highest level. Over the years she has managed to combine work on high profile yacht projects with full time university studies. Kamila loves fine dining and wine tasting when travelling. She is a keen runner taking part in various endurance events, snowboarder, as well as HIIT and yoga student. She loves architecture, interior design and arts in general.

Stewardess – Vicky Lentle

British

Previous yachts:

M/Y AMEVI (80m)

Interests:

Ballroom dancing, diving and squash



Vicky decided that yachting was the perfect career for her as she has a passion for travelling and meeting new people. After studying for a month at UKSA she began her yachting career on an 80m motor yacht which she spent two years working on. Before her yachting career Vicky achieved a 2:1 BSc degree in Psychology. She was also the British Under 21 champion in classical dancing along with her partner in 2005 and 2006.

Stewardess – Chantelle Reid

Australian

Previous Yachts:

M/Y FLYING FOX (74m)

M/Y MARIU (52m)

Interests:

Yoga, sports, natural medicine and the ocean



Chantelle grew up on the beaches of the east coast of Australia. Her passion for the ocean began at a very young age and for many years Chantelle dedicated her time to surf lifesaving. This love for the sea is what drew her to the yachting industry. Chantelle holds a diploma in massage and beauty therapy, is a qualified yoga instructor and is in the midst of her Bachelors Degree in Natural Medicine.

Stewardess – Sansanee Polchandha

Thai

Previous Yachts:

M/Y CLEOPATRA (57m)

M/Y LUCKY ME (42m)

M/Y LADY S (68m)

M/Y LIONHEART (65m)

M/Y MIRGAB VI (49m)

Interests/Languages:

Photography, travelling, cooking, skiing, bicycle, running and hiking and reading

Thai and English



Sansanee was born in Thailand, and now residing in Antibes, France. Sansanee has spent most of her professional career in hospitality working in London's four star restaurants and also in SPA as a massage therapist. In 2012 she decided to leave her land-based position behind to move into the yachting industry. Sansanee has 10 years experience as a massage therapist and specialises in Thai massage, deep tissue massage, Swedish massage and reflexology. She is looking forward to providing you with a professional treatment on board SIREN.

Stewardess – Carolina Naarstad

Norwegian

Previous Yachts:

M/Y SOLANDGE (85m)

M/Y YALLA (74m)

Interests/Languages:

Salsa dancing, sailing, waterskiing, snowboarding, skiing, dress making, DIY jewelry and travelling

Norwegian, English and Spanish.



Carolina grew up in Norway and worked as a hairdresser for 13 years travelling around the country attending courses and shows. She has traveled the world and lived in Spain to learn Spanish and worked as volunteer in Ecuador and Colombia for a year. Carolina started yachting January 2014 as a stewardess and hairdresser.

2nd Officer – Adam Robinson

British

Previous Yachts:
S/Y ROSEHEARTY (56m)

Interests:
Camping and hiking



Having grown up on the south coast of the UK, Adam has been sailing since a child, upon leaving school Adam worked through the ranks of the prestigious charter sailing yacht ROSEHEARTY, even skippering her over the Atlantic. He is excited to be joining his first motor yacht and is looking forward to being part of the SIREN crew.

Chief Engineer – Martin Rosser (Rotational)

British

Previous Yachts:
TATOOSH (93m)
ALAMSHAR (50m)
SPUTNIK (60m)

Interests:
Golf , watersports and motor racing.

Martin is married and has a 12 year-old son called Alexander who has a black belt in Taekwondo. He has spent over 23 years in the Merchant Navy, and the past eight years in the superyacht industry. When Martin is not on board he likes to spend his time surfing, playing golf, and spending time with his son fishing on their boat. Martin is also a motor sport fanatic and has driven racing cars on F1 tracks.

Chief Engineer – Michael Story (Rotational)

British

Previous Yachts:
M/Y COMMITMENT (40m)
M/Y INDIAN PRINCESS (55m)
M/Y LADY ANN MAGEE (50m)
M/Y BLUE MOON (60m)
M/Y SLIPSTREAM (60m)
M/Y XANADU (60m)

Interests:
Sailing and hiking

Michael has nearly 30 year's experience as a professional sea-going engineer. He joined the Merchant Navy in 1980 as an Engineer Cadet where he spent a total of four years at college and at sea. After graduating, Michael sailed as a "Fourth", and eventually progressed up to Chief Engineer. On his travels he has visited virtually all corners of the globe, having passed through both the Suez and Panama Canals on a regular basis and have been round the Cape of Good Hope on a number of occasions. Michael eventually left these 'deep sea' boats in 2003 to join the world of super-yachting. One of his great passions is walking, and he recently made a trip to Nepal, with friends to climb a 6,500m (21,500ft) peak.

2nd Engineer – Paul Rodriguez (Rotational)

British

Previous Yachts:

M/Y SIRIUS (30m)
M/Y LOTUS (37.5m)
M/Y STELLA FIERA (35m)
M/Y STELLA (42m)
M/Y HELAITAN (26m)
M/Y AWESOME (40m)

Interests:

Aeronautics, football, motocross and climbing

Paul Rodrigues hails from the north west of England, Chester, UK. His extensive engineering background has seen him delve into various disciplines including Formula 1 racing, prestige car maintenance and aeronautics. Having previously spent six years as a aeronautical engineer with Airbus UK, Paul chose to pursue a more adventurous career whilst maintaining the engineering practices and was drawn into the yachting industry. He has served six and a half years in the industry. Paul enjoys travelling and experiencing different walks of life. He teaches and participates in many sports including football, motocross and climbing. He has an adventurous spirit and loves a challenge.

2nd Engineer – Matthias Kunert (Rotational)

German

Previous Yachts:

M/Y WORLD IS NOT ENOUGH (42.4m)

Interests/Languages:

IT and automotive
German and English

Matthias was born and raised in southern Germany near Munich, where the traditional dress is the lederhosen and a dirndl for the girls. After attending high-school for three years he found out that his real skills were more hands on and began, at the age of 15, a five year Porsche-Mechanic apprenticeship. After several years of working on high performance cars he took part in a second education to become a certified IT-network administrator. With those two fields of activities there was a high demand in the yachting industry where he served since then. Matthias follows in his grandfathers footsteps who worked in the MAN ship engine block casting facility in Augsburg.

3rd Engineer – Steve Green

British

Joined SIREN June 2014

Interests:

Guitar, painting and sports

Steve began his career in yachting in 2009. He was born and raised in Bromley, South London, where he completed his studies in Mechanical Production Engineering. This is his first year on SIREN and he is looking forward to the upcoming challenges of working on board.

Deckhand – Dean Alexandre

South African

Previous Yachts:

M/Y MARIU (49.9m)

Interests:

Diving and travelling



Dean's passion for the ocean came when he was young and growing up on the coast of Durban, South Africa allowed him to spend his time diving, surfing and boating. After spending many years as a dive guide in South Africa, specialising in shark dives he decided to head overseas to join the professional yachting industry. Dean has been enjoying the experience, seeing the world by boat meeting new people and being on the ocean. He is re-joining SIREN and is looking forward to a busy season.

Deckhand – Sam Room

Scottish

Joined SIREN in June 2014

Interests:

Watersports



Growing up on the east coast of Scotland, Sam has been a big fan of watersports from a young age. Competing nationwide for many years Sam took his passion for watersports and used it to travel world wide. Over the past few years he has been instructing windsurfing and kitesurfing, from the remote islands of Cape Verde to the vast beaches of Brazil. Sam has been a deckhand on SIREN for one season and is excited to share his knowledge of water sports in the upcoming season.

Deckhand – Sam Thapa

Nepalese

Previous Yachts:

M/Y LE GRAND BLEU (113m)

M/Y TALISMAN C (74m)

Interests/Languages:

Travelling

Indii, Nepali and English



Sam has worked on several high profile yachts over the past six years, prior to joining the SIREN crew in June 2008. He is industrious and hard working with a permanent smile on his face. Sam is happily married with two small children back in Nepal. He enjoys life in general, along with travelling and seeing new places and countries.

Deckhand – Evyatar Madlar

Israeli

Previous Yachts:

M/Y TIMELESS (23m)

Interests/Languages:

Diving

French, Hebrew and English



Evya was born and raised in Israel in a small town near the Dead Sea, after finishing high school at the age of 18 he joined the IDF for four years of service. Evya then decided to go south to the Red Sea and work in the diving industry, as a dive instructor. Evya enjoyed working within the marine world and after completing his Yachtmaster, Evya moved to south of France and joined the yachting industry. After three seasons in the Mediterranean, Evya is proud to join SIREN and becoming part of her crew.

Thai Massage 60 minutes | 90 minutes

A blend of stretching and pressure techniques are combined with the application of warmed oils to relieve stress and balance the body's energy

Balinese Massage 60 minutes | 90 minutes

A unique blend of stretching, long flowing strokes, warmed aromatic oils and pressure techniques are used in this flowing massage designed to relax and reduce muscle tension

Aroma Therapeutic Lymphatic Drainage Massage 60 minutes | 90 minutes

A gentle, soothing massage treatment designed to detoxify and harmonise the body while creating balance in the body's energy. A Warmed aromatic essential oil blend is created to suit your needs.

Sports/Remedial Massage 60 minutes | 90 minutes

A blend of very firm pressure point and deep tissue techniques combined with stretching and warming of the muscle tissue designed to relieve overworked and tight muscle groups.

Himalayan Full Body Salt Exfoliation 45 minutes

Choose from one of our two Rituals Himalayan Salt Exfoliations. Warming Ginger and Fresh Eucalyptus for a more stimulating and detoxifying body scrub or Indian Rose and Sweet Almond oil for hydration and stress relief. Finish with a warm and refreshing shower before a nourishing moisturiser is gently massaged into the skin.

Rituals Complete Care Indulgent Facial 60 minutes

Specifically designed to suit your skin care needs using our Rituals natural botanical product range. The skin is cleansed and toned before a gentle exfoliation. A stress relieving facial, neck, shoulder and scalp massage is performed using and Ayurvedic technique to encourage skin cell rejuvenation and increase circulation before applying a treatment masque. Finished with moisture protection and SPF.

Manicure 60 minutes

Full care of the cuticles, nails, hands and arms with a healing Himalayan salt exfoliation and stress relieving hand and arm massage. Finished with an OPI polish of your choice.

Pedicure 60 minutes

Full care of the cuticles, nails, feet and legs. Stress relieving foot bath, Himalayan salt exfoliation, lymphatic drainage and pressure point foot massage complete with an OPI polish of your choice.

Yoga 15 minutes | 30 minutes | 60 minutes

Yoga is a mental, physical and spiritual practice designed to balance the mind, body and soul. A sequence of postures and breathing practices will be tailored to suit your needs. Classes can be personal one on one, or can be taught in a group. 15 minute sequences are recommended for either morning or evening as these simply assists your body to awaken or to unwind. Each class is designed to suit your level of experience.

Hair Cut or Trim | 30 Minutes

Ladies Style or Blow Dry | 45 minutes

Hair Treatment and Scalp Massage | 30 minutes