
Experience

ākikō



SPECIFICATIONS

LENGTH
34m / 111.6ft

GUESTS
12

SLEEPS
10

YEAR
2007 / 2016

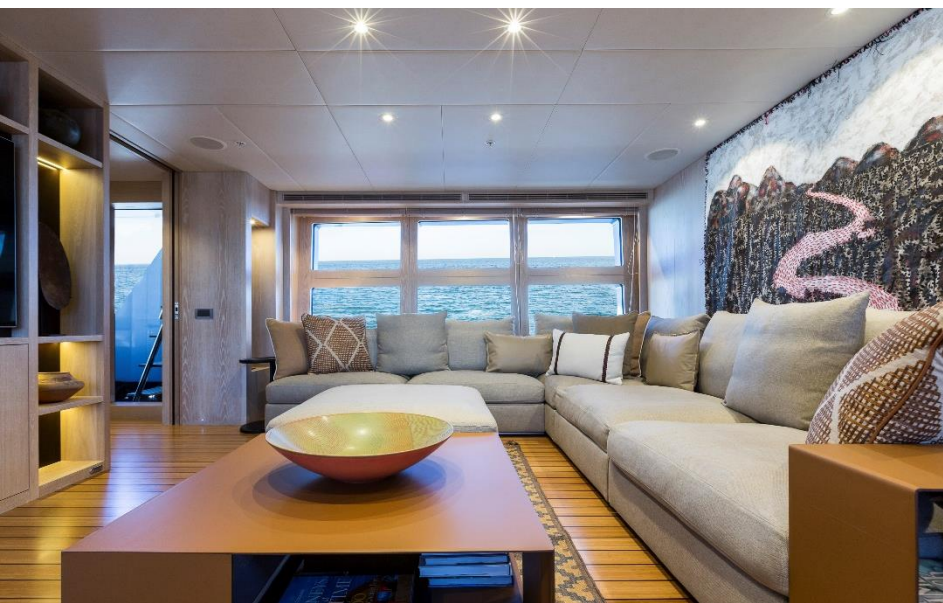
BUILT	2007, Alloy Yachts (NZ). Refitted in 2016 by McMullen & Wing (NZ)
DESIGN	Exterior: Gregory Marshall Interior: Alloy Yachts and the Owner during the refit
BEAM DRAFT	7.8m (25ft) 2.3m (7.5ft)
GROSS TONNAGE	281 tonnes
ACCOMMODATION	5 cabins (Master, VIP, 1 x Double, 2 x Twin each with 1 bunkbed and a single)
GUESTS	Cruising: 12 Overnight: 10
CREW	Captain + 5
WATERSPORTS	1x Naiad 10m, 1x 5.5m Barra boat 2x 3pax waverunners, Kayaks, SUP, surfboards, extensive fishing and spearfishing equipment Scuba and snorkelling gear. The crew on board include qualified Dive Masters and Master Fishermen
AWARDS	WINNER: World Superyacht Awards 2008: Best Displacement Motor yacht of below 500GT (30m to approximately 49.9m)





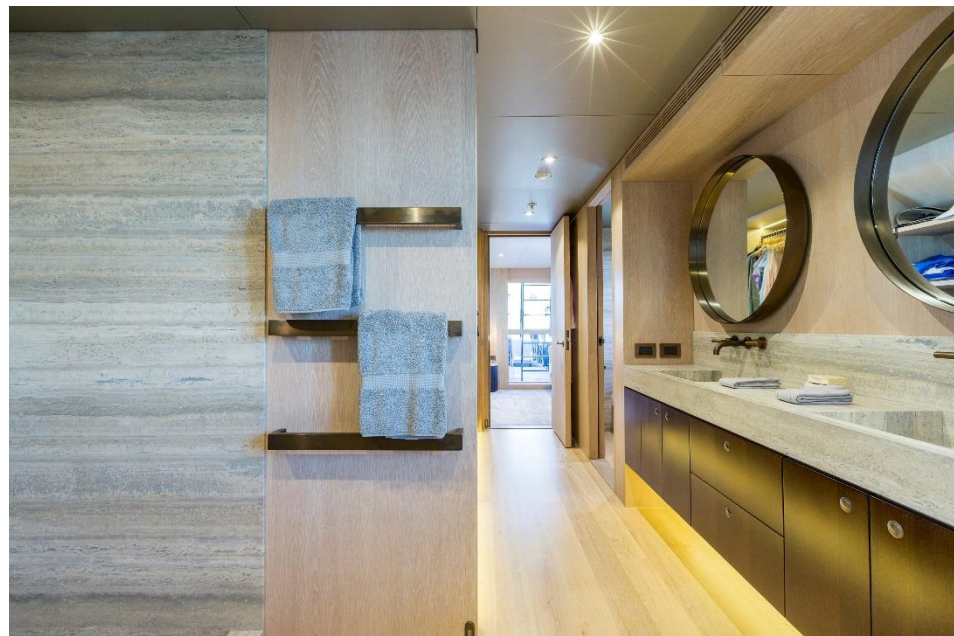
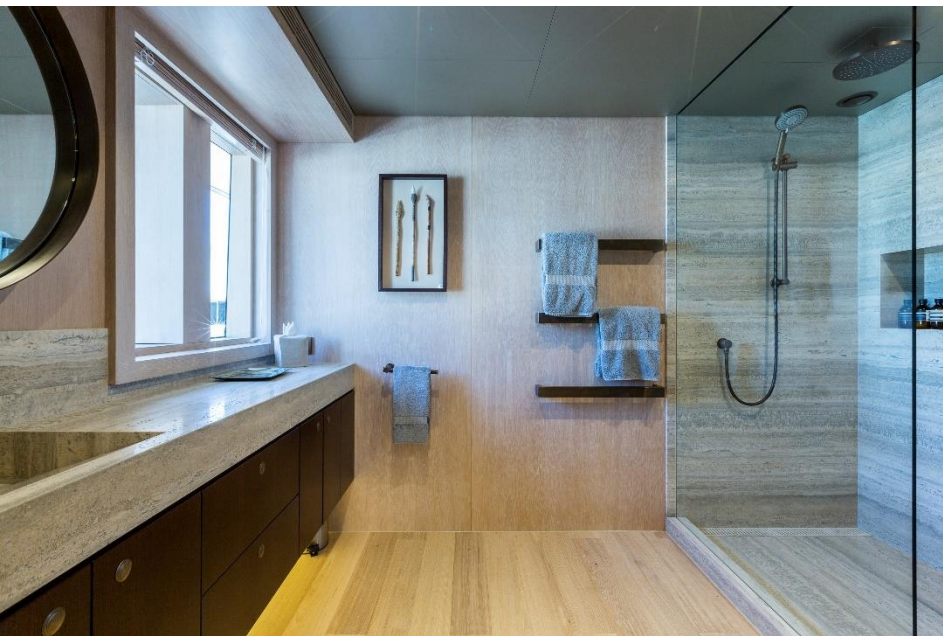
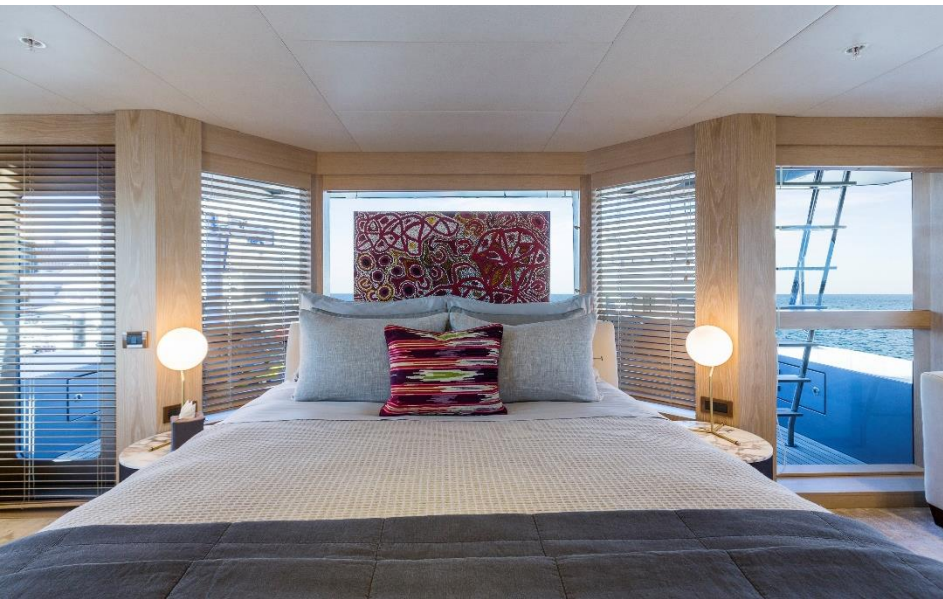






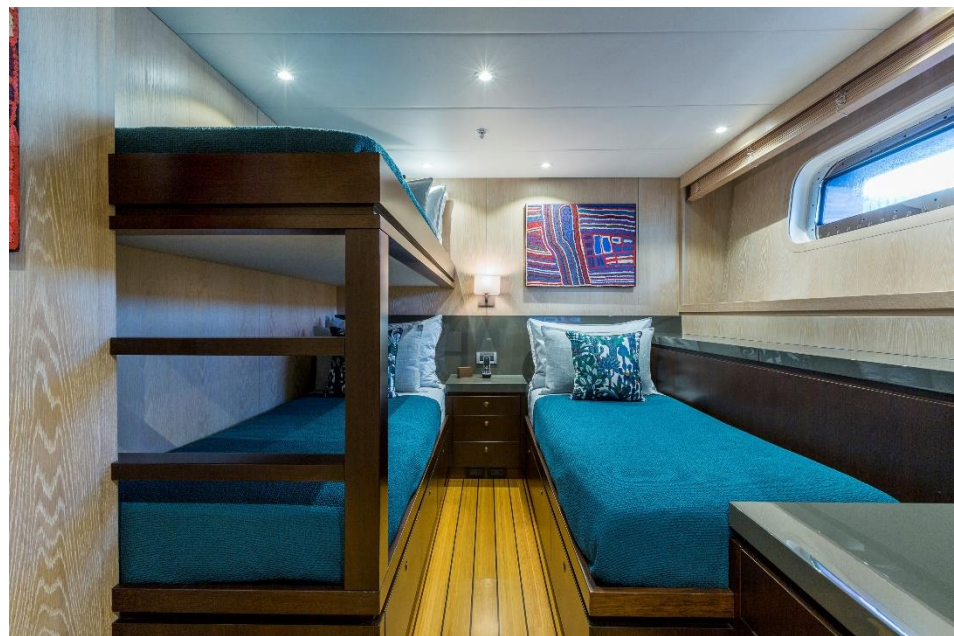






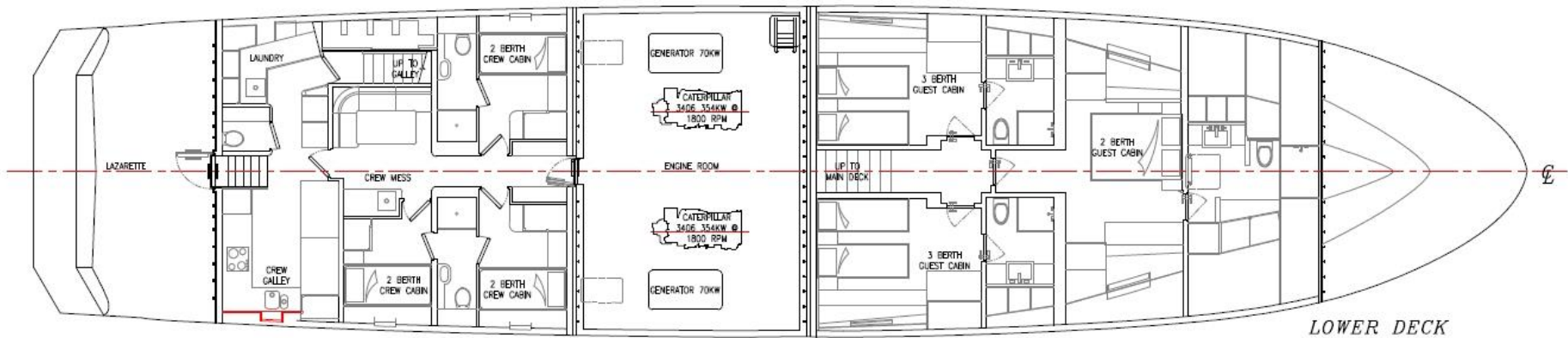
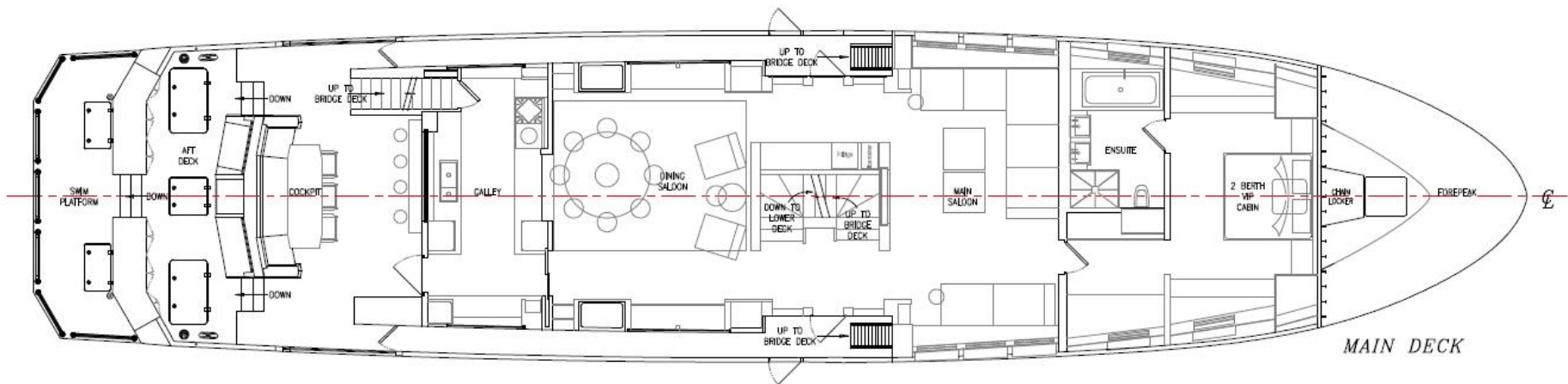












34 33 32 31 30 29 28 27 26 25 24 23 22 21 20 19 18 17 16 15 14 13 12 11 10 9 8 7 6 5 4 3 2 1

