



# DOUCE FRANCE

Alumarine: 42.2m/138ft, 1998, 6 staterooms





Main Saloon



A Warm Welcome



Bar Area





Cockpit Dining



Cockpit Dining



Cabin shown as double, can be converted to twin





Cabin shown as double, can be converted to twin



Cabin shown as twin, can be converted to double



Main Deck



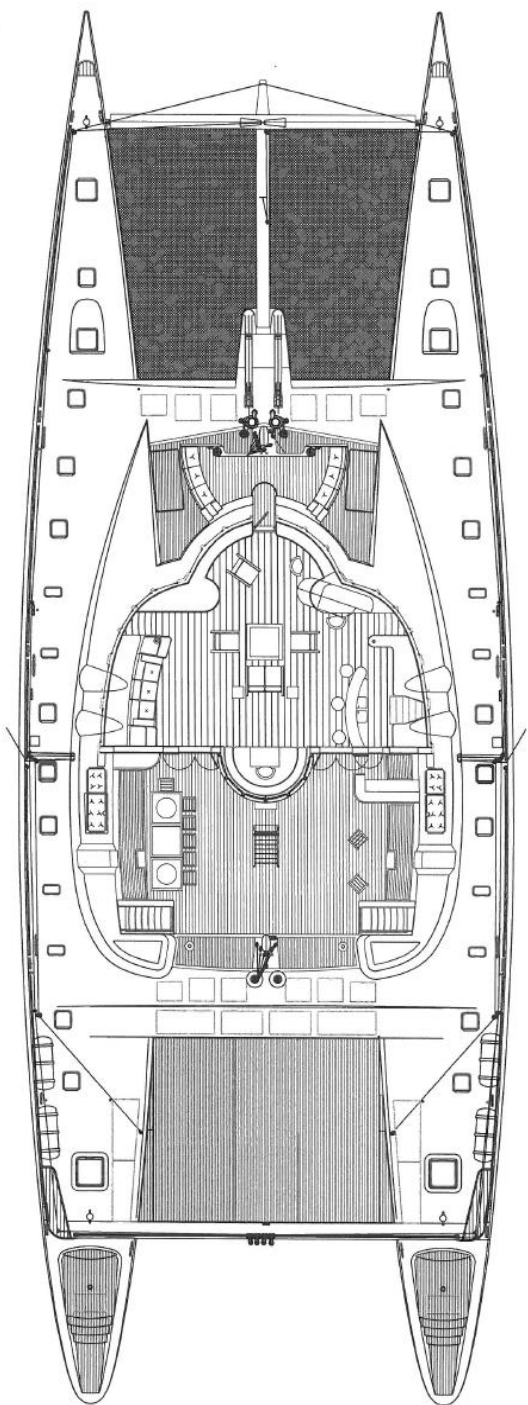
Relaxation on the Aft Deck



Aft Deck Massage







## Crew Profile

**CAPTAIN:** Pascal Goger  
**Languages Spoken:** English & French  
**Nationality:** French  
**Age:** 53

Pascal's family have been sailors for centuries - records show that one was a privateer captain! Having sailed around the world over many years Pascal's knowledge of the best spots to cruise or to dive is inexhaustible. Taking command on many different kinds of vessels such as cruise ships, high speed craft and other passenger's ships Pascal has held this position for over 16 years. He has served as Captain on DOUCE FRANCE for many years and has great charter experience. He particularly enjoys sharing DOUCE FRANCE's stunning sailing performance with his guests. In his free time Pascal enjoys diving, spear fishing and helping to raise his son.

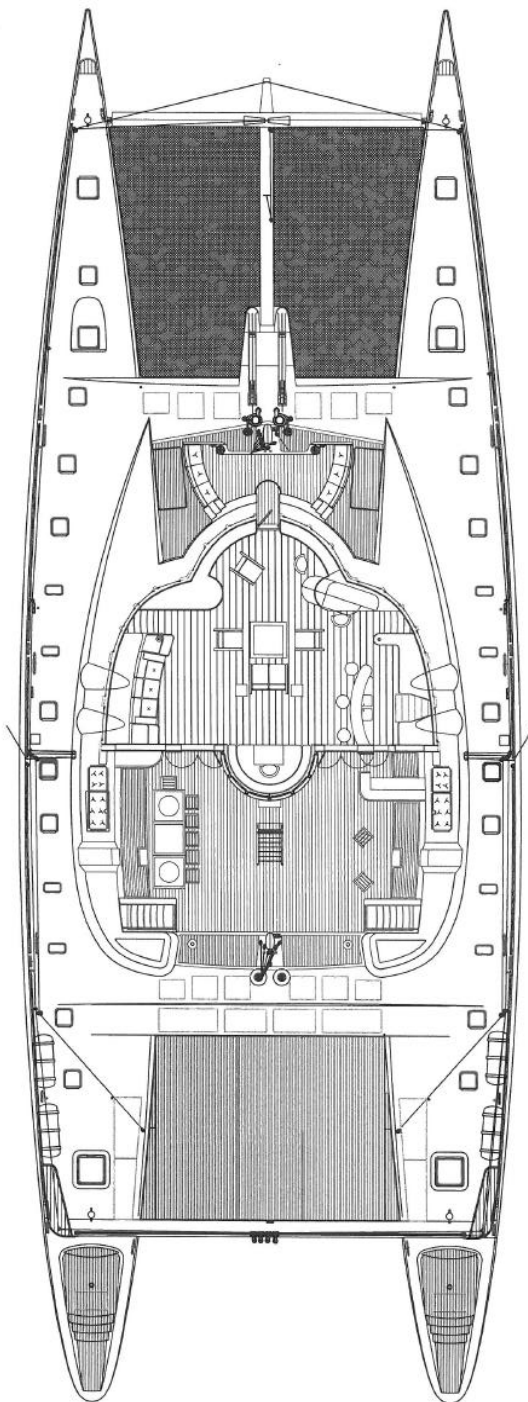
**CAPTAIN:** Mikael Tanguy  
**Languages Spoken:** English & French  
**Nationality:** French  
**Age:** 45 years

Mika was born in Brittany, France and grew up on an island named "Belle Isle en Mer" and from a young age he dreamt of becoming a seaman. His main experience was on a passenger ship where he started as a boson and upgraded to first mate. With this experience he wanted to have a new challenge and applied for the position of first mate on DOUCE FRANCE in 2006. Mika fits in perfectly with the crew of DOUCE FRANCE and has worked as first mate for the first 5 years and, in the last 2 years, became the relief captain, with great success. During his 7 years on board DOUCE FRANCE he has expanded his knowledge in safety, charter services and daily management. He provides the best service and is always very attentive to the wishes of his guests. Mika is athletic and enjoys all water sports as well as tennis and running. His other interests include photography and the cinema.

**CHEF:** Shailen Sewlall  
**Languages Spoken:** French & English  
**Nationality:** Mauritian  
**Age:** 39

Chef Shailen Sewlall hails from the island of Mauritius in the Indian Ocean and it was there that he completed his professional training at the Hotel School of Mauritius. Shailen's career has taken him to several top hotels throughout the region including the Lemuria Resort, Seychelles Islands. He worked there as Sous Chef under Robert Lalleman, a third generation French chef and acclaimed as one of the top seven chefs of Provence for his inspired cuisine. In 2004, Shailen decided to leave terra firma behind and joined the cruise ship "Pearl of Seychelles" as Head Chef. After a very successful year there, he joined DOUCE FRANCE. As one would expect of a chef who comes from an island paradise, Shailen specializes in fresh seafood - usually caught from the yacht that day! He also lists fusion, a tantalizing blend of French and Creole cooking from his native Mauritius, as a specialty. Shailen's cuisine receives rave reviews from all guests on board DOUCE FRANCE.





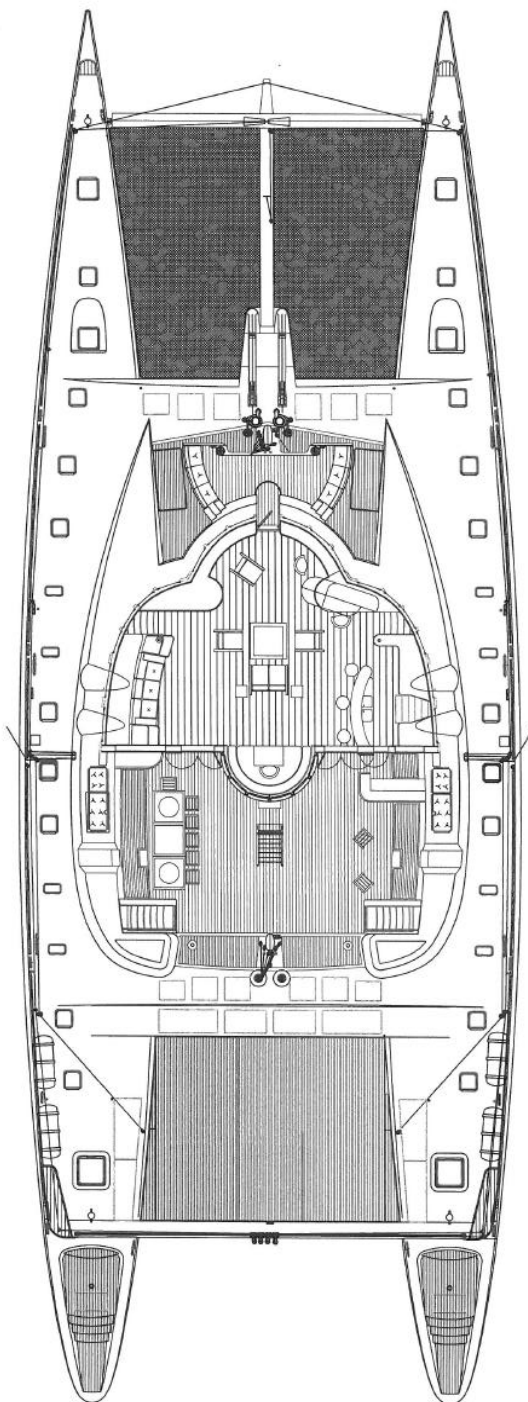
**CHEF:** Sonea Namdev  
**Nationality:** Mauritian  
**Age:** 39.  
**Languages Spoken:** English & French  
 Sonea has previously worked in some of the best resorts in Malaysia, Australia and Mauritius with some starred Chefs before joining the yachting world in 2007. He is very experienced in preparing menus using a variety of cooking techniques and ingredients and he is happy to adapt his cuisine skills to meet the wishes of all the guests. His repertoire includes European, Thai, Japanese, Indian and Creole cuisine. He will render a good service, ensuring that guests on board DOUCE FRANCE feel satisfied and their stay on board is flavoursome. In his spare time, Sonea enjoys reading, music, movies, sports, meeting people and of course, cooking!

**FIRST MATE & DIVE INSTRUCTOR:** Ambroise Seiffert  
**Nationality:** French  
**Age:** 31  
**Languages Spoken:** French & English  
 Being very dedicated Ambroise is always happy to serve the guests. He is in charge of the navigation and a hard worker with passion. He is also a very experienced diver and will teach with great pleasure. He will be your submarine guide.

**HANDOVER CHIEF-MATE:** Theo Guilvard  
**Nationality:** French  
**Age:** 31  
**Languages Spoken:** English, Portuguese, Spanish & French  
 Theo is the chief mate when Ambroise is on holiday. He has strong maritime experience and has worked on all types of vessels, but his love of the sea has led him to choose a career in the yachting industry. He is devoted to his love of sailing and in providing an excellent service to guests.

**ENGINEER:** Erwann Pean  
**Nationality:** French  
**Age:** 31  
**Languages Spoken:** French & English  
 Erwann (pronounced R1) has been chief mechanic on board for nearly three years, responsible for the main engines, generators, water makers and all other technical systems. He has overseen all mechanical upgrades and refits. Erwann loves everything about the sea, is a Dive Master and is also skilled at kite surfing, which he will be happy to teach.

**HANDOVER ENGINEER:** Rodolphe Gaudin  
**Nationality:** French  
**Age:** 37  
**Languages Spoken:** French & English  
 Rod is not only able to take care of our machinery, but is also a rigging specialist, having gained much experience when he was captain of an authentic "Old Gaffer" and also for the famous family of the Penduck sailing boats. He enjoys many sports and is a very keen kitesurfer and practices others sports, including mountain biking.



**STEWARDESS :** Jovilyn Bermudo **Nationality:** Filipino  
**Languages Spoken:** English & Filipino **Age:** 36  
Jovilyn is from the Philippines and has worked on DOUCE FRANCE for three years. She will provide the best services with a passion and always with a smile. She is very professional and is also an experienced masseuse. She looks forward to welcoming guests on board.

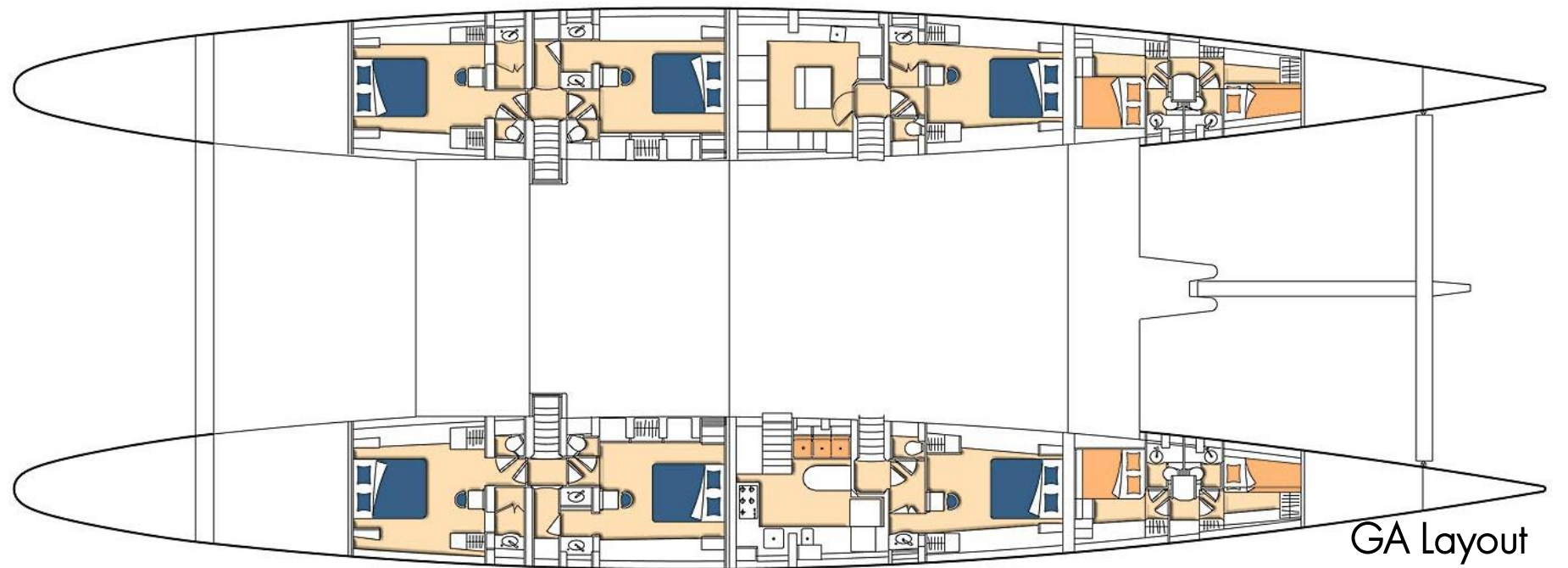
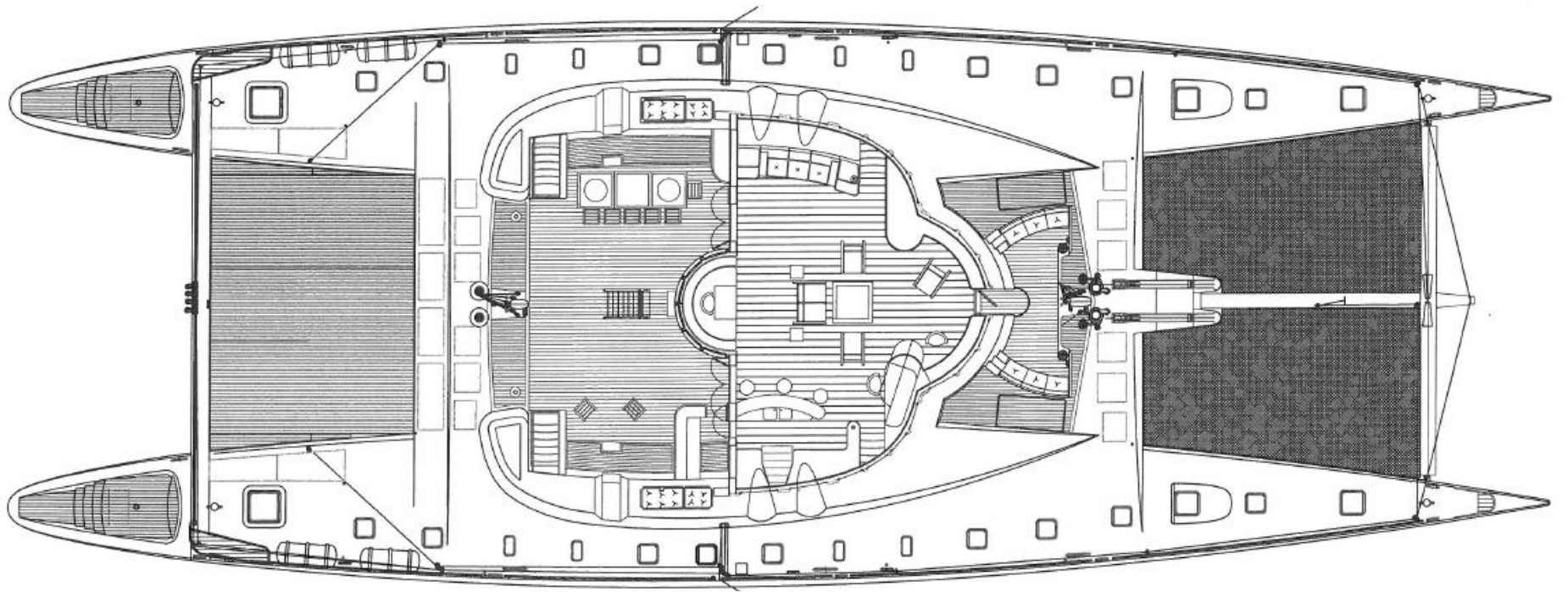
**STEWARDESS:** Michelle Malari **Nationality:** Filipino  
**Languages Spoken:** English & Filipino **Age:** 30  
Michelle has been on board DOUCE FRANCE since 2010 and brings a strong background in hospitality, catering and service. Born and educated in the Philippines, she enjoys being part of the DOUCE FRANCE team.

**SECOND HOSTESS:** Recruiting in progress

**DECK HAND &  
DIVE INSTRUCTOR:** Anne Charlotte Pierre **Nationality:** French  
**Languages Spoken:** French & English **Age:** 29  
Living in the Marie Galante (French Indies), Ann has worked on DOUCE FRANCE for two years and has gained her diving experience in Egypt, Bahamas and French Indies. She will accompany guests during excursions to the best shore sites and ensure guests will have a cruise to remember. When Ambroise is on holiday, Anne is the dive instructor.

**HANDOVER  
DECKHAND:** François Racine **Nationality:** French  
**Languages Spoken:** French & English **Age:** 23  
François is a young seaman and very motivated, but he has already experienced life on many kinds of vessels, including fishing boats and passenger ships. During his free time, he practices Thai boxing. He lives on the beautiful island in France "Belle Isle en Mer" and always has a foot in the sea....

Please note several of DOUCE FRANCE crew work on rotation so there may be an alteration of crew for charters booked ahead.



GA Layout

## SPECIFICATION

Length: 42.20m (138' 5")

Beam: 15.40m (50' 6")

Draft: 2.50m (8' 2")

Year Built: 1998 (Refit 2009)

Builder: Alumarine

Flag: Belgium

Port of Registry: Belgium

Max Speed: 19 knots

Cruising Speed: 9 knots (engines only)

## TENDERS, TOYS & FACILITIES

6.5m Zeplin w/ 115hp

4.2m crew tender w/ 40hp

2 Laser Sailing Dinghies

Windsurfer

Wakeboard

Sea Kayaks

Snorkelling equipment

Fishing equipment

2 x donuts (single and double)

Water-skis (adults, mono ski, children's skis)

Scuba diving equipment, wet suits, w/  
Divemaster as permanent member of crew

BBQ

iPod docking stations in each room

Flatscreen TVs and DVD players

Speakers for cabin and cockpit

Xbox 360

Bimini for shade

## ACCOMMODATION

Number of Cabins: 6

(All are convertible between 1 x Queen double or 2 x single beds)

Total Guests (Sleeping): 12

Total Guests (Cruising): 12

Accommodation is offered for up to 12 guests in 6 stylish air-conditioned staterooms. Each of these staterooms is lined with pale sycamore wood and offers the option of either a queen-double or twin bed arrangements. At 50 sq ft in size, this also leaves ample room for a convertible desk / dressing table. All have spacious en-suite showers and separate heads facilities.

All specifications & images are given in good faith and offered for informational purposes only. The publisher and company does not warrant or assume any legal liability or responsibility for the accuracy, completeness, or usefulness of any information and/or images displayed. Yacht inventory, specifications and charter prices are subject to change without prior notice. None of the text and/or images used in this brochure maybe reproduced without written consent from the publisher.



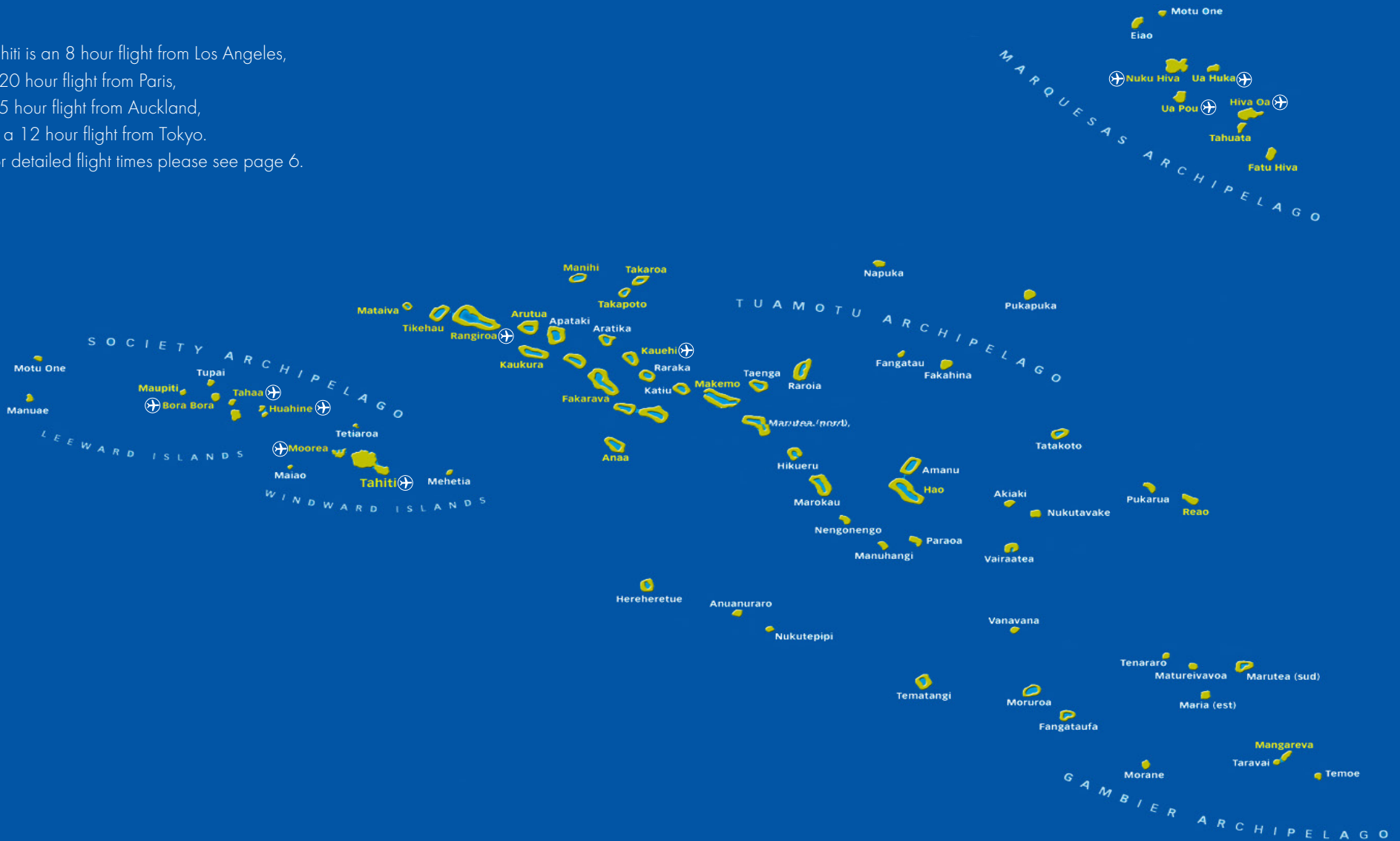
# | EXPLORE THE EXOTIC ON BOARD DOUCE FRANCE

[CLICK HERE TO ENTER](#)



# FRENCH POLYNESIA & HER ISLANDS

Tahiti is an 8 hour flight from Los Angeles,  
a 20 hour flight from Paris,  
a 5 hour flight from Auckland,  
or a 12 hour flight from Tokyo.  
For detailed flight times please see page 6.



# FRENCH POLYNESIA & HER ISLANDS

[NEXT](#) [PREV](#) [PRINT](#) [CLOSE](#)



With a superb tropical climate for most of the year and fanned by trade winds, the warm waters of the South Pacific set the scene for an unforgettable desert island charter. Marooned in an idyllic ocean forgotten by the 21st century, the islands of French Polynesia are a paradise of turquoise lagoons, lush scenery and deserted beaches. More than 130 islands are scattered over five archipelagos in three main island groups - all of which are ideal for sailing. Explore the timeless beauty of the volcanic-formed Tahiti and her surrounding islands, cruise on to the Leeward Islands where lush rainforests soar thousands of feet out of turquoise lagoons and provide vivid green backdrops to the psychedelic colours of the South Sea.

Board the tender and zap through Moorea's azure lagoon dropping anchor at a secret sandy spot. Moments later curious and numerous sting-less rays will be visiting you. If you are daring, brave the tepid waters with the visiting rays and you can enjoy the sensation of them swimming close to you. Go snorkelling or scuba diving or relax on-board DOUCE FRANCE watching people fly through the air with their kites.

Sitting on the tender outside the Bora Bora lagoon roll backwards into the water and drop down to dive in the famous white valley. See the sloping golden sands and watch sharks, tuna, barracuda and an array of tropical fish. Later enjoy the romantic sunset reflecting in the mountains as you sip cocktails or perhaps enjoy a therapeutic massage on board expertly given by the resident masseuse.



# DOUCE FRANCE – SAMPLE ITINERARY

[NEXT](#) [PREV](#) [PRINT](#) [CLOSE](#)

Iles de la société French Polynesia in 10 days. Discover a truly exotic charter around French Polynesia and her islands with turquoise lagoons, white sands and palm-fringed beaches. A tropical heaven for world class snorkeling and scuba diving. Immerse yourselves in the Polynesian culture, the smiling, friendly people and explore the breathtakingly beautiful islands of Tahiti, Moorea and Bora Bora.



**DAY 1:** Upon arrival in Tahiti, DOUCE FRANCE and her crew welcomes you on board in Marina Tiana. Explore DOUCE FRANCE and her 6 chic, air conditioned cabins and relax with a welcome drink in her spacious cockpit. Depending on the time of your arrival, the crew will set her sails and take a gentle cruise to Moorea, approximately 4 hours sailing. Dropping anchor in the white sand close to a coral reef, Moorea is a beautiful, mountainous, tranquil island well worth exploring. The reef is found all around you offering the first dive in The Pass. Moorea is also a very good spot to meet the whales and to snorkel with them.



**DAY 2:** Sailing onto Cook's Bay in the north of Moorea for your first full day and a chance to experience the water sports toys. A vast selection to choose from; wakeboarding and water skiing or slowing down with dinghy sailing, wind surfing or kayaking.

**DAY 3:** Sailing at dawn to Huahine, approximately 80nm but an anchorage not to miss! Huahine is called the Garden of Eden with an immense tropical jungle thriving with coconut plantations, vanilla orchids, banana groves, breadfruit trees and watermelon fields. The captain drops anchor in the Virgin Island and can sail into the lagoon from the east to the west between Huahini Hui and Huahine Iiti. (Little Huahine) to the south.



**DAY 4:** The west area of Huahine provides the opportunity to dive in The Pass which is always a wonderful sight. Should you not wish to dive, relax on board having a massage within the tranquil surroundings of Huahine or discover the magic of the black pearl at a local pearl farm.

**DAY 5:** In the morning sun, set the sails and head to Raiatea approximately 25 nm. Raiatea, meaning "faraway heaven" and "sky with soft light", was first named Havai'i after the homeland of the ancient Polynesians and is the most sacred island in the South Pacific. A favorite for all divers, the shared lagoon between the islands is rich with a number of sites and a variety of landscapes including sea mounts, caverns, drop-offs and wrecks. Raiatea also has a established town called Uturoa.



**DAY 6:** A shared lagoon between Raiatea and Taha'a enjoy some quiet sailing in the lagoon or diving and snorkeling in the north Pass which offers a variety sights and colours. Dive the walls of purple coral as you drift amongst active marine life.



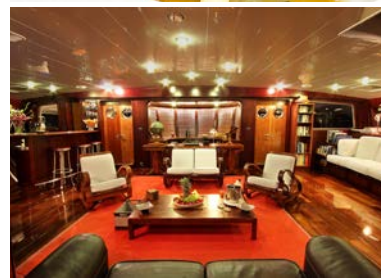
**DAY 7:** Taha'a, with the rich aroma of vanilla lingering heavily in the air, offers a glimpse of the traditional, tranquil life of the Tahitians. Producing 70-80% of all French Polynesia's vanilla this flower-shaped island's simple beauty is charmed by soft mountain shapes and bright sand beaches. In the fertile valleys cutting within the island, local farmers grow watermelon, vanilla, and copra - an island worth exploring.

**DAY 8:** A great day for relaxation circumnavigating Taha'a, DOUCE FRANCE will sail inside the protection of the coral reef. Behind the beautiful coral reefs that encircle the islands, DOUCE FRANCE sails the most exotic cruising grounds in the world with swimming, sunbathing, white beaches and enjoy a fresh culinary experience on board. Also home to the Le Taha'a Island Resort & Spa guests can treat themselves to body treatments and unsurpassed views of Bora Bora.



**DAY 9:** Today, setting sail for Bora Bora, this island is the most photogenic island in the world with the most beautiful lagoon. It is common to meet gigantic manta rays gliding gracefully in the abundance of large marine life here and can be seen easily just by snorkelling.

**DAY 10:** Visiting Bora Bora lagoon you can play with all the water sports toys in the crystal blue water or satisfy your pearl shopping post lunch at the Four Seasons or St Regis.



**DAY 11:** A late morning start with a relaxed breakfast and enjoy the last few hours on board DOUCE FRANCE taking in the amazing mix of your experience amidst Polynesian culture and a tropical heaven, all from one of the world's largest sailing catamarans! A perfect end to an exotic cruise. Guests can fly from Bora Bora to Papeete and then onward home.

This itinerary is a sample itinerary only and of course can be tailored to each client's requirements. In the Society Island we can cruise from 7 days to 3 weeks and it is possible to come back to Tahiti during the 3 week cruise. Any itinerary is weather dependent.



# FAST FACTS

[NEXT](#) [PREV](#) [PRINT](#) [CLOSE](#)



## GEOGRAPHY

Tahiti is the largest island in the Windward group of French Polynesia (an overseas country of the French Republic), located in the archipelago of the Society Islands in the southern Pacific Ocean.

Tahiti and her islands cover the same area as the European Union. However the land above sea level accounts for some 7,000 square kilometres consisting of 118 islands, grouped into five archipelagos (4 volcanic, 1 coral).

## WHEN TO GO

The weather is drier between May and October and more humid from November to April. The average temperature is 27°C year round.

## ENTRY BY AIR

The main airport is the Faa'a International Airport built on the lagoon, about 5km west of Papeete (the Capital of French Polynesia), located on the island of Tahiti. Frequent airline connections link Tahiti with Europe, Los Angeles, New York, Hawaii, New Zealand, Australia, and Japan. (5hrs from Auckland / 8hrs from LA & Sydney / 20hrs from Paris)

## POPULAR ACTIVITIES

Some of the world's best snorkelling, scuba diving, and surfing.

Whale, dolphin and turtle encounters.

Shark & stingray feeding and deep-sea fishing.

Pearl and vanilla farm visiting.

Journey through the Monoï Road.





## TAHITI

### WINTER 2014-15 FROM PARIS » AIR TAHITI NUI FLIES:

Mon, Wed, Fri, Sun: Paris/Los Angeles/Papeete; 17:35 - 20:40, connection 22:40 - 05:05 (+ 1 day)  
Sat: Paris/Los Angeles/Papeete; 10:30 - 13:10, connection 15:30 - 21:55  
Return: Tue, Thu, Sat, Sun; Papeete/Los Angeles/Paris: 07:20 - 17:35, connection 19:35 - 15:30 (+1 day)  
Wed: Papeete/Los Angeles/Paris; 23:59 - 10:15 (+1 day), connection 15:45 - 11:35 (+1 day)



### SUMMER 2015 FROM PARIS » AIR TAHITI NUI VLIEGEN FLIES:

All days: Paris/Los Angeles/Papeete; 11:30 - 14:30, connection 16:30 - 21:50  
Return: All days: Papeete/Los Angeles/Paris: 23:59 - 11:15, connection 13:15 - 09:15 (+1 day)

### FROM LONDON » AIR NEW ZEALAND FLIES:

Daily but Sunday the flight time is 23:00 (normally around 34 - 41 hour flight time)  
Sun: London/Los Angeles/Papeete; 10:30 - 13:50, connection 17:05 - 22:30  
Return: Sat, Mon, Wed; Papeete/Los Angeles/London; 23:59 - 10:15 (+1 day), 16:00 - 10:40 (+1 day)



### FROM NEW YORK » AIR TAHITI FLIES:

Daily flight to Los Angeles to fly onward to Papeete with Air Tahiti, see above  
Departure from New York is approximately 17 hours to the connecting flight



## THE MARQUESAS

### AIR TAHITI FLIES:

Papeete to Nuku Hiva (daily), Hiva Oa (daily)  
6 days p/w to Ua Pou  
4 days p/w to Ua Huka via Nuku Hiva