



# AZIZA

**Length:** 40.90 metres (134' 2")

**Beam:** 8.10 metres (26' 7")

**Draft:** 2.35 metres (7' 9")

**Number of Guests:** 8

**Number of Crew:** 7

**Built:** 2013

**Builder:** International Shipyard Ancona

**Flag:** Spanish

**Hull Construction:** Steel

**Hull Configuration:** Displacement

Air conditioning, Approved RYA water sports centre, Deck Jacuzzi, Gym/exercise equipment, Zero speed stabilisers to reduce any rolling motion while at anchor, WiFi connection on board

---

A truly modern motor yacht, AZIZA is a beautiful, tri-deck displacement vessel. With sleek, aggressive lines and seamless quality, she is a fantastic Italian-built motor yacht with fantastic facilities throughout. Her interior includes a beautifully appointed dining saloon and relaxing area on the main deck, with a lounge and bar area on the upper deck. Offering a huge sense of space, the light and contemporary design exudes a calm ambience, which is echoed throughout her extensive outdoor deck areas.

Guests are encouraged to make the most of al fresco living on

board. The large sun deck is inviting with two lounging areas with sunbathing pads, a shaded dining area and bar with a subtly designed satcom arch and awning for shade. Numerous socialising areas can also be found on the upper and main deck aft areas. The upper deck seating area is the ideal location for an aperitif before retiring to the formal dining area on the main deck or the al fresco dining area on the sun deck.

AZIZA provides four luxurious cabins, including a spacious master suite on the main deck. The full beam suite boasts panoramic views, an office area, and a generously sized walk-in wardrobe. She also has three additional guest cabins on the lower deck, along with a convertible fourth cabin/ gymnasium.

AZIZA has all the very latest communications, and a wide range of watersports equipment. With a Spanish charter license and enthusiastic and knowledgeable crew, she is perfect for charters through the Mediterranean and nearby seas.

# KEY FEATURES

- 1** Approved RYA training centre for guests' use of personal watercraft
- 2** Full beam master cabin with panoramic windows, office area and generously sized walk-in wardrobe
- 3** Beach club
- 4** Fully equipped gym
- 5** Spacious sun deck with jacuzzi, bar, dining and lounge area
- 6** Teppanyaki grill & BBQ
- 7** Zero speed stabilisers to reduce any rolling motion while at anchor



Main deck - dining



Upper saloon



Sun deck dining



Master cabin



Double cabin



Twin Cabin



Sundeck



Sundeck



Jacuzzi



Gym



Beach club



Exterior

# SPECIFICATIONS

## ACCOMMODATION

**Number of Guests:** 8

**Number of Cabins:** 4

**Cabin Configuration:** 3 Double, 1 Twin, 1 Convertible

**Bed Configuration:** 3 King, 2 Single

## EQUIPMENT

**Engines:** Engines: 2 x Caterpillar C18 acert diesel engines

**Generators:** 2 x Kohler 99kw

**Stabilizers:** Najad zero speed

**Range and consumption:**

4.400NM@11knots - 125 l/h

3.500NM@12knots - 165 l/h

2.900NM@13knots - 220 l/h

**Cruising Speed:** 12 knots

**Fuel Consumption:** 165 Litres/Hr

## WATERSPORTS

**Tenders + Toys:** 5m Castoldi jet tender with 110hp engine

2 x Yamaha VXS waverunners (3 man)

Wakeboard & tows

Diving gear

Snorkelling gear

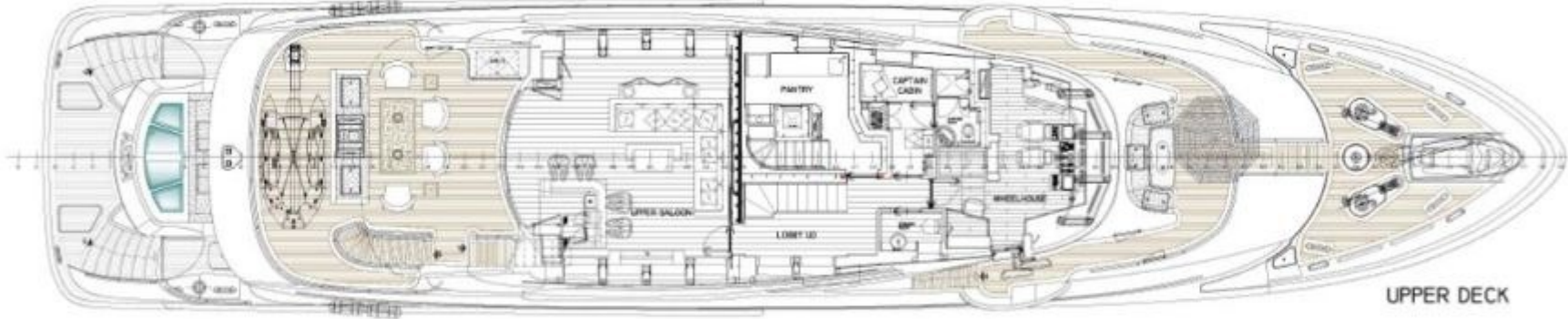
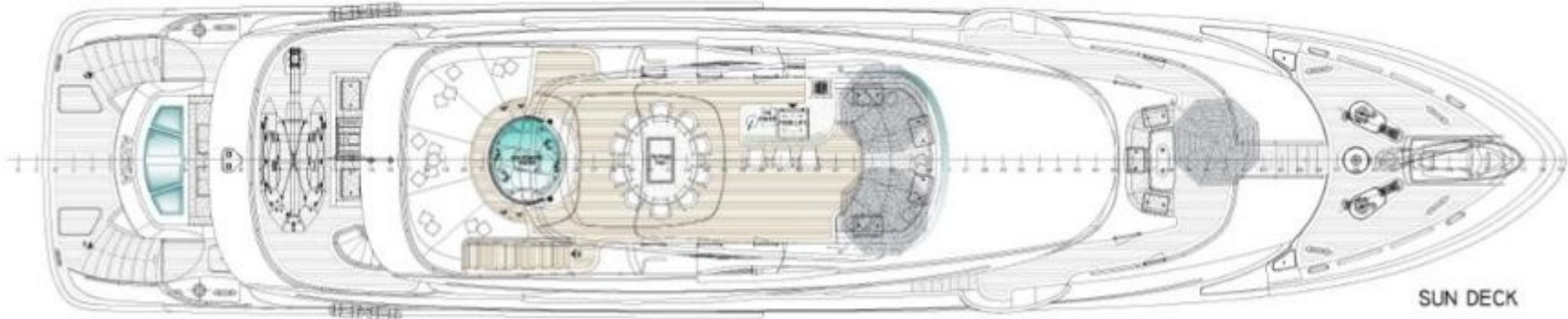
3 x seats multi-function tow mattress

2 x SUP boards Mistral Adventure 11,5 x 32

1 x knee board

Beach games and toys

# LAYOUT





## **Disclaimer**

This document is not contractual. All specifications are given in good faith and offered for informational purposes only. The publisher and company do not warrant or assume any legal liability or responsibility for the accuracy, completeness, or usefulness of any information and/or images displayed. Yacht inventory, specifications and charter prices are subject to change without prior notice. None of the text and/or images used in this brochure may be reproduced without written consent from the publisher.