



ENDEAVOUR 2

Length: 49.90 metres (163' 9")

Beam: 8.79 metres (28' 10")

Draft: 2.6 metres (8' 6")

Number of Guests: 10

Number of Crew: 8

Built: 2017

Builder: Rossinavi

Naval Architect: Arrabito Naval Architects

Flag: Maltese

Hull Construction: Aluminium

Hull Configuration: Displacement

Air conditioning, Gym/exercise equipment, Stabilisers at anchor, WiFi connection on board

ENDEAVOUR 2 is a new built tri-deck explorer yacht, launched by Rossinavi in 2017. This 50m has been conceived for long range cruising. With a maximum speed of 16 knots, and a cruising speed of 12 knots her range is 5,000 nm. ENDEAVOUR 2 displacement aluminium yacht is suited for long range expeditions.

The vision of this extraordinary yacht was born through the desire to explore the far away and lesser-known coasts and oceans of this world. ENDEAVOUR 2 is powered by a diesel electric power plant and propulsion by means of azimuthing

Rolls Royce thrusters.

The exterior areas of the ENDEAVOUR 2 make various configuration possible, including an exclusive sun area forward, placed over the wide garage.

She is a fully customized yacht with minimalist interior and lightweight materials. The yacht's profile is characterized by a broad use of window surfaces that guarantee a constant dialogue between interior and exterior areas and ensure magnificent floor to ceiling panoramic views from inside.

ENDEAVOUR 2 features a saloon with sliding doors on the upper deck as well as an exclusive sun area and a cockpit furnished with sunbeds forward. Furthermore the outside dining area is located on the upper deck, while the main aft deck is equipped with comfortable seating and an enclosed bimini for protection in bad weather.

ENDEAVOUR 2 accommodates up to 10 guests in 5 staterooms. She is ideally suitable for 8 adults and 2 small children.

The generous full-beam owner's suite is located forward on the main deck and offers plenty of light and a wonderful panorama thanks to the large windows along the two main sides, essentially bringing the outdoors inside. The owner's suite

KEY FEATURES

- 1** Generous full-beam Owner's suite located on the main deck, featuring a private balcony and a huge walk-in shower.
- 2** VIP suite with private saloon, convertible into 2 double staterooms.
- 3** In 2018 ENDEAVOUR 2 was awarded the prestigious Best Power 45 - 60m Award by the International Superyacht Society.
- 4** With a top speed of 16 knots, cruising speed of 12 knots and 5,000 nm she is made for transoceanic passages.



ENDEAVOUR 2 - Hull



ENDEAVOUR 2 - Aft view



ENDEAVOUR 2 - Heli shot



ENDEAVOUR 2 - Heli shot II



ENDEAVOUR 2 - Tender launch



Upper deck forward - Sunbathing & lounge area



Upper deck forward - Sunbathing & lounging area forward (rendering)



Upper deck aft - Dining area (rendering)



Main deck aft - Comfy lounge area



ENDEAVOUR 2 - Bathing platform



Upper deck - Sky lounge / Upper saloon II (rendering)



Upper deck - Sky lounge / Upper saloon (rendering)



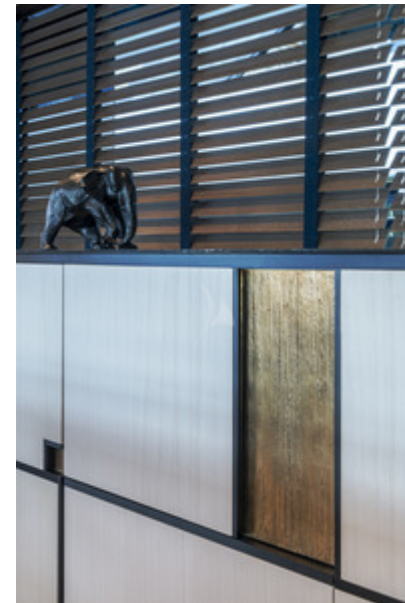
Main deck - Saloon, looking forward to the dining area



Main deck - Saloon with panoramic views



Main deck - Saloon detail (rendering)



Saloon - Interior detail



Dining area for 10 guests (rendering)



Main deck - Floor from main saloon to stairway



Main deck - Owner's cabin (rendering)



Main deck - Owner's cabin, seating (rendering)



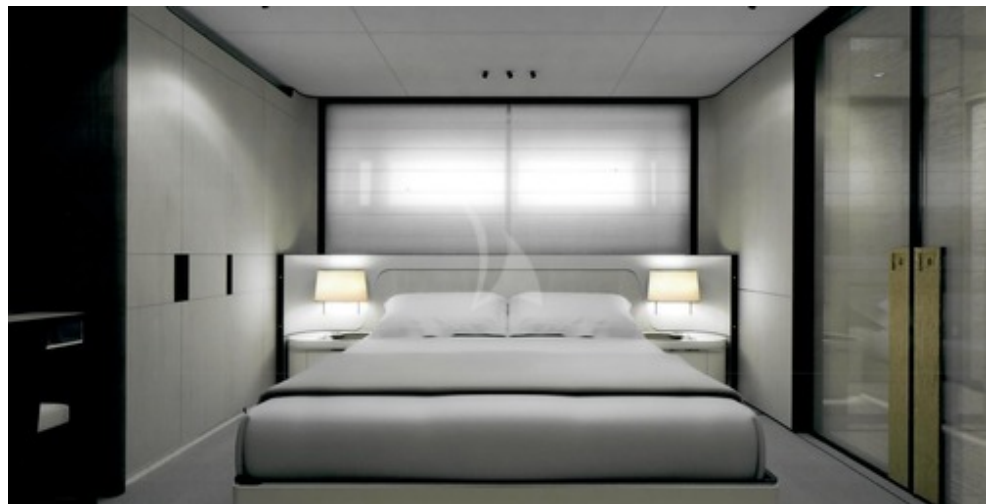
Lower deck - Stairway detail



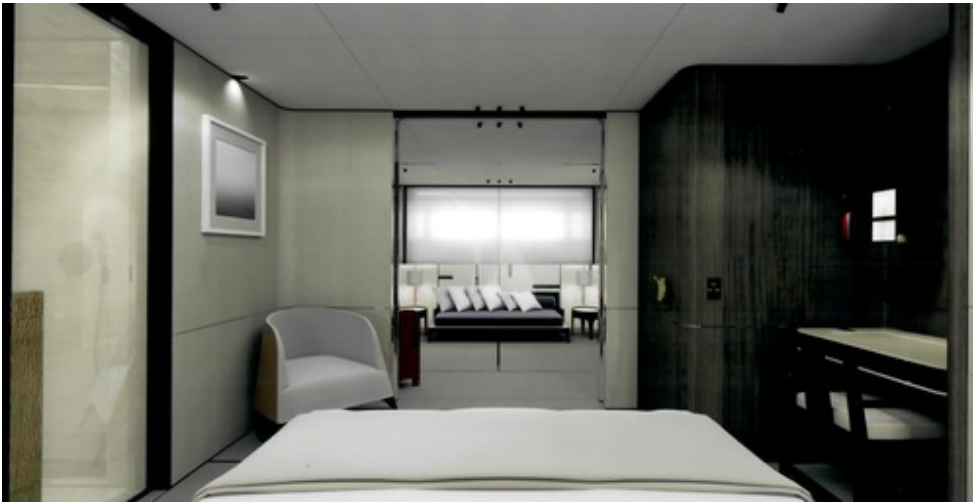
Lower deck - Stairway leading to guests accommodation



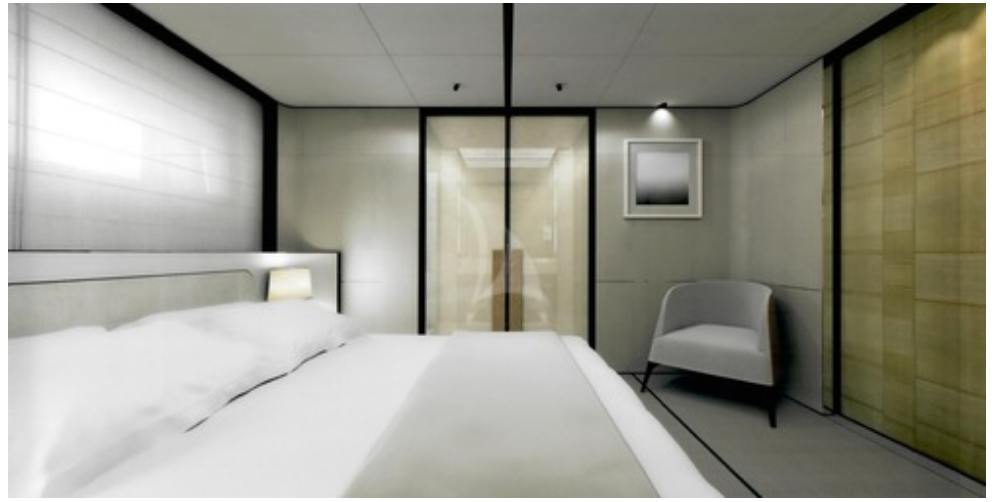
Lower deck - VIP suite with private saloon



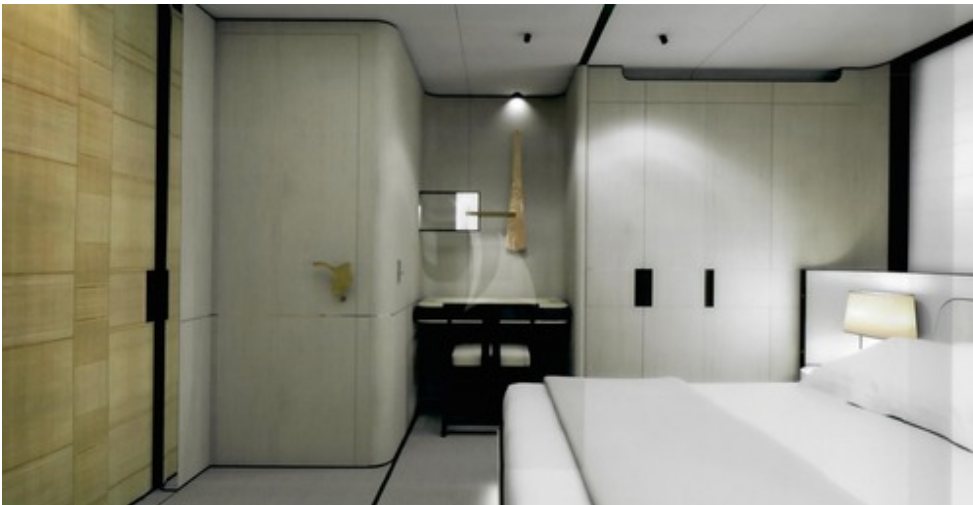
Lower deck - VIP cabin, bed (rendering)



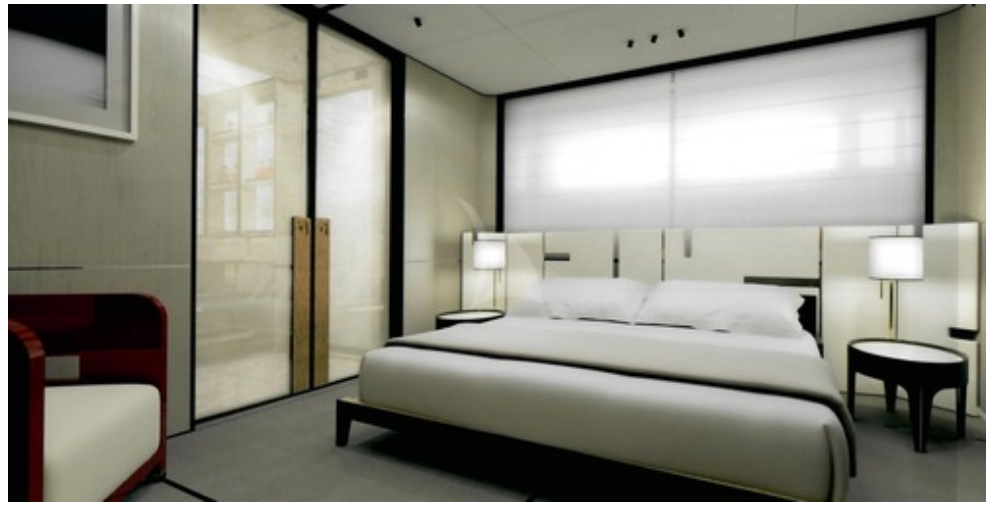
Lower deck - VIP cabin looking through the open sliding door to saloon, which can be converted into a double cabin (rendering)



Lower deck - VIP cabin with closed sliding door (rendering)



Lower deck - VIP cabin with closed sliding door II (rendering)



Lower deck - Double cabin, sofa converted to bed, suitable for two children (rendering)



Lower deck - Twin cabin port



Lower deck - Twin cabin port II



Lower deck - Twin cabin starboard, looking aft (rendering)



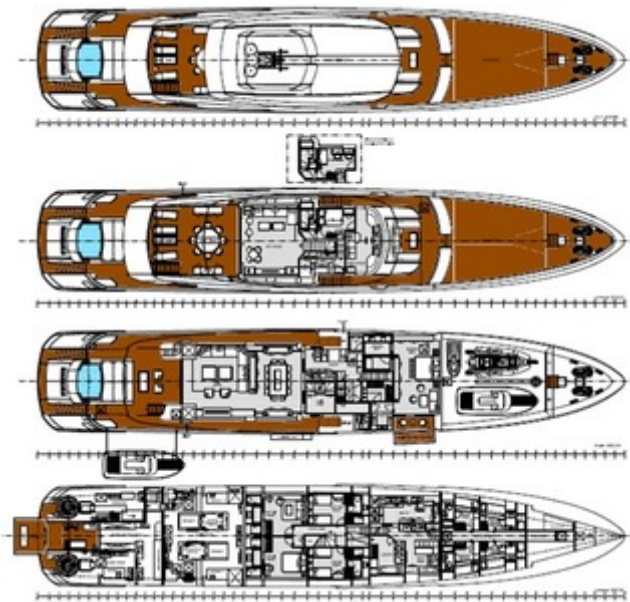
Lower deck - Twin cabin, looking fwd. (rendering)



Lower deck - Twin cabin bathroom



ENDEAVOUR 2 - 7m Limousine tender



Layout

SPECIFICATIONS

ACCOMMODATION

Number of Guests: 10

Number of Cabins: 5

Cabin Configuration: 2 Double, 2 Twin, 1 Convertible

Bed Configuration: 2 Queen, 1 Double, 4 Single

EQUIPMENT

Engines: Engine:

Diesel Electric System with 5 Generators

Generators:

2 x Caterpillar ACERT C32 952 kW, 3 x Caterpillar ACERT C4.4 80 kW

Fuel consumption of generators is 40 l/hour

Thrusters: 2 x Rolls Royce US105 P9 CRP

2x CMC Stabilis Electra Zero Speed Stabilizer

Yacht is equipped with a Dynamiq Positioning System keeping always the same position

Cruising Speed: 12 knots

Fuel Consumption: 160 Litres/Hr

WATERSPORTS

Tenders + Toys: Tender:

6m amphibious tender with 115 hp Yamaha outboard and Sea Legs 3 wheeled drive system for land cruise (not available during Mediterranean season)

4.90m Sportis S4900 RIB tender, model S with Yamaha outboard engine (new in 06/2018, for service & water sports)

7m limousine tender with 280 hp Mercruiser inboard Z drive (Please note that this tender cannot be launched from the fore deck garage during bad weather.)

Toys:

2 x Seabob F5

2 x SEADOO SPARK Jet-skis, 2 seater

JOBE SCOUT4 inflatable towing donut

HEMICOMBO Skis + towing line

JOBE JINX Junior wakeboard pack

JOBE LOGO wakeboard pack

2 x JOBE inflatable paddle-board

8 x snorkeling gear for adults

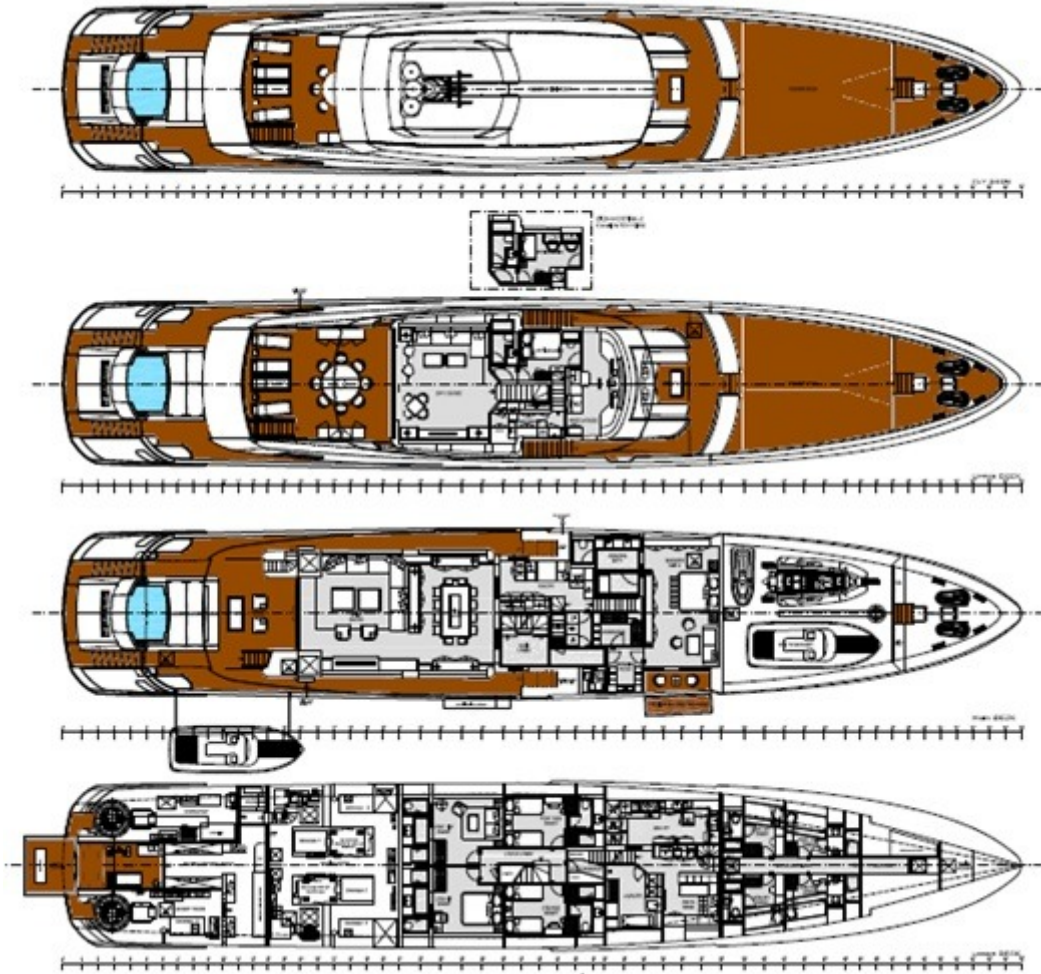
4 x snorkeling gear for kids

8 x Swimming goggles for adults

4 x Swimming goggles for kids

Lots of neoprene protection suits, pants, shoes, gloves.

LAYOUT



Disclaimer

This document is not contractual. All specifications are given in good faith and offered for informational purposes only. The publisher and company do not warrant or assume any legal liability or responsibility for the accuracy, completeness, or usefulness of any information and/or images displayed. Yacht inventory, specifications and charter prices are subject to change without prior notice. None of the text and/or images used in this brochure may be reproduced without written consent from the publisher.