



PREFERENCE 19

Length: 36.40 metres (119' 5")

Beam: 7.20 metres (23' 7")

Draft: 2.2 metres (7' 3")

Number of Guests: 10

Number of Crew: 7

Built: 2011

Naval Architect: Tansu

Flag: Maltese

Hull Construction: Steel

Hull Configuration: Displacement

Air conditioning, Approved RYA water sports centre, Gym/exercise equipment, Stabilisers at anchor, Stabilisers underway, WiFi connection on board

PREFERENCE 19 is a 36.4m custom expedition luxury yacht with a steel hull and aluminium superstructure, featuring an ultra-modern stabilisation system to reduce roll motion and ensure ultimate comfort throughout your charter. Her striking exterior and elegant interior design are the work of the design team of Tansu Yachts. Bold styling, beautiful furnishings and sumptuous seating feature throughout to create an elegant and comfortable atmosphere once aboard. Her extensive deck spaces are a match for a 50m yacht, whilst her size allows the Captain to take her into secluded anchorages that larger yachts could not access.

PREFERENCE 19 can accommodate up to 10 guests in 5 sumptuous staterooms, including a full-beam master stateroom on the main deck, along with a further 2 double staterooms and 2 twin staterooms on the lower decks, all en suite.

The yacht comes with an incredible selection of tenders, toys and exercise equipment to keep all ages entertained, including a 6.5m tender, 2 waverunners, 2 Seabobs, multiple towable toys, exercise equipment, basketball hoop and fish-food golf kit to name just a few!

PREFERENCE 19 has an outstanding crew of 7, including a world-class chef, who will take care of your every need and ensure a safe and memorable charter experience.

KEY FEATURES

- 1** Head-turning explorer looks
- 2** Basketball hoop, yoga mats, free weights and punch bag
- 3** Golf mat, clubs and fish food golf balls
- 4** Extensive list of water-sports toys, including 2 x waverunners and 2 x Seabobs
- 5** Nautibuoy inflatable platform
- 6** Huge deck spaces for sunbathing and entertaining
- 7** 6.5m tender which takes 12 guests



At anchor



At anchor sunset



At anchor sunset



At anchor



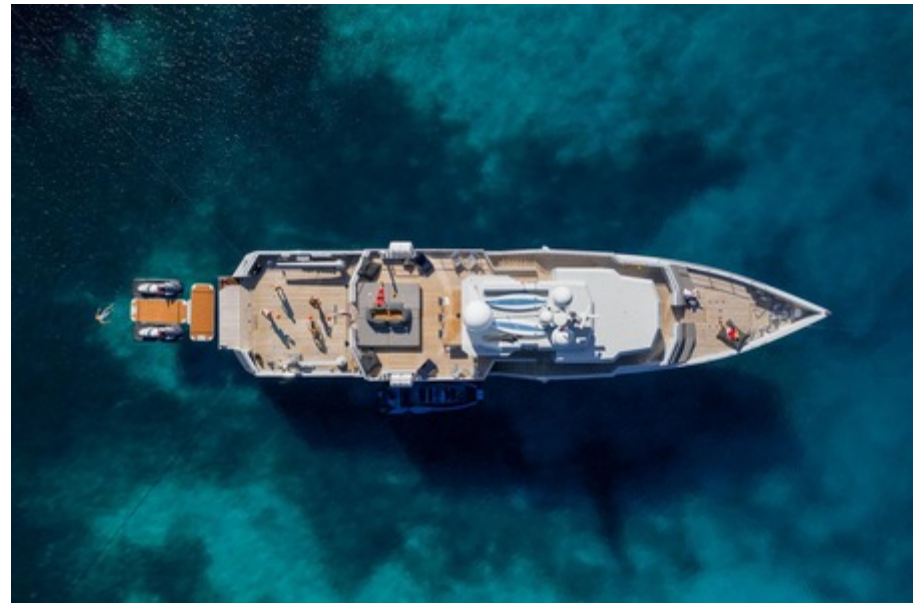
At anchor



Overhead



Overhead



Overhead



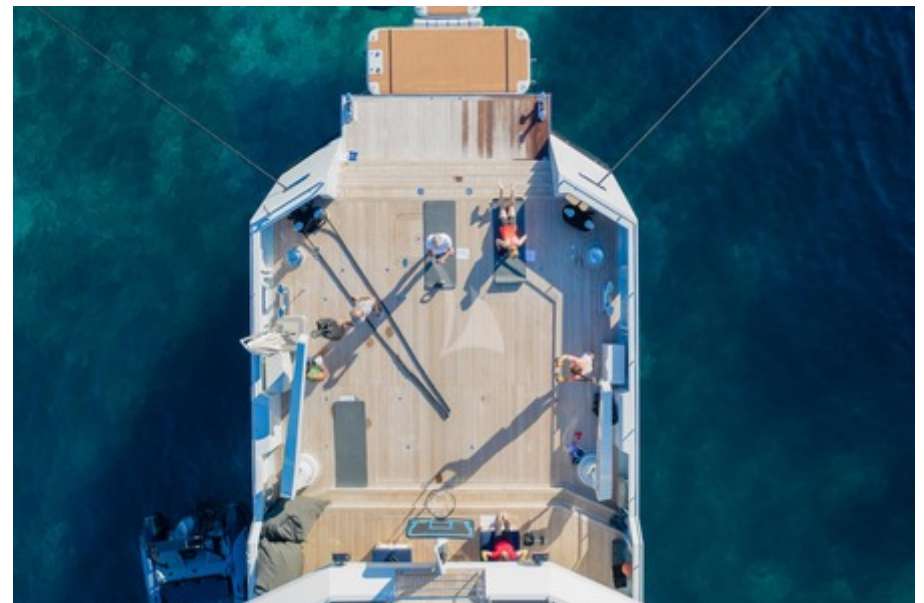
Aft view



Underway



Decks



Deck exercises



Deck exercises



Deck exercises



Morning swim



Sunpads



Morning coffee



Morning exercise on deck



Aft deck dining



Aft deck



Breakfast in style



Fine cuisine



Fine cuisine



Cheers



Morning coffee



Hideaway



Main deck aft



Main deck aft



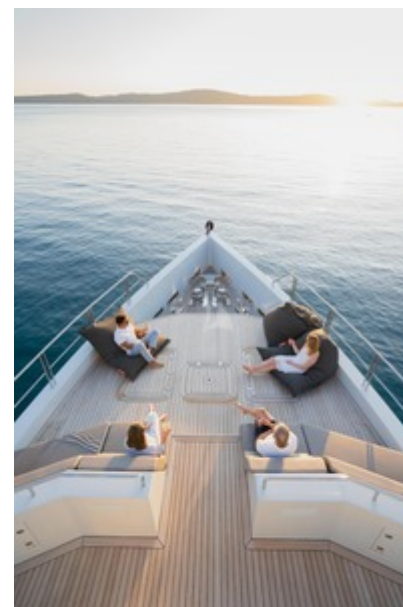
Main deck aft



Main deck aft



Side decking



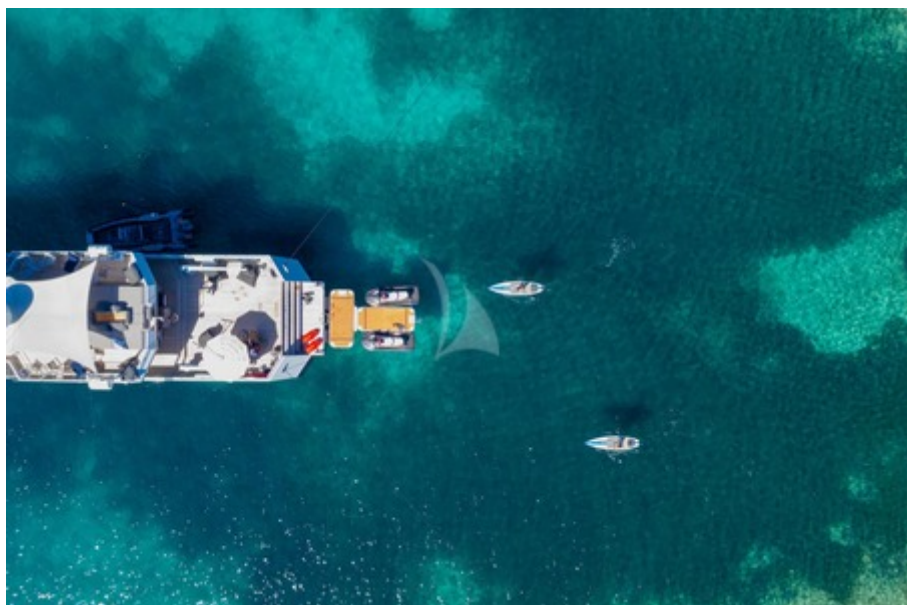
Evening relaxation



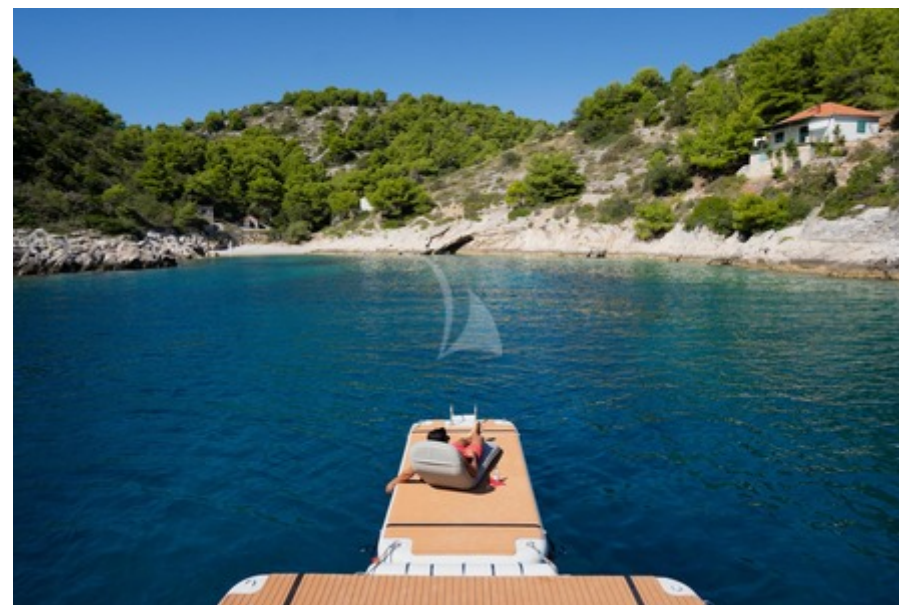
Evening relaxation



Inflatable docking pontoon



Inflatable docking pontoon



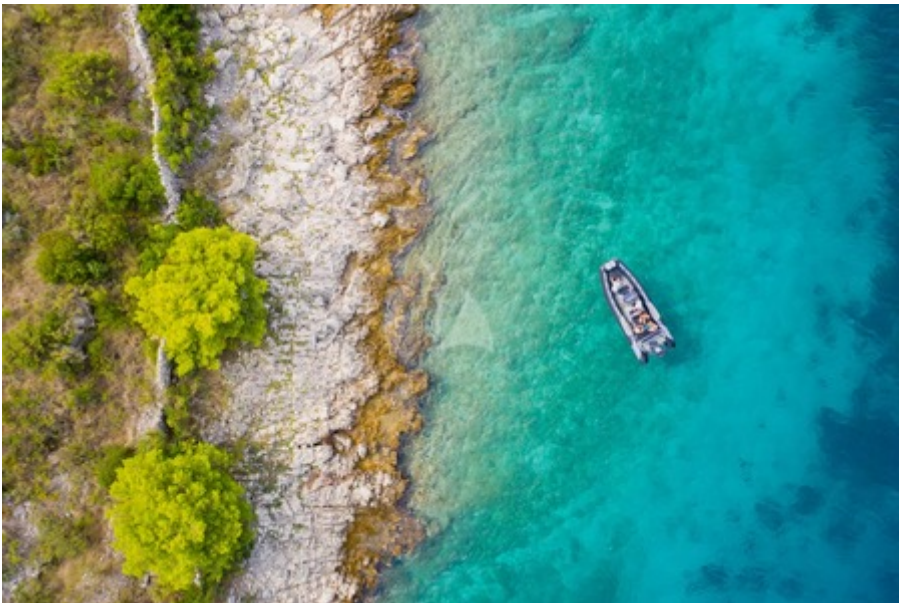
Inflatable docking pontoon



Gocycles



Golf with fish food golf balls



Tender



Main salon and formal dining



Main salon and formal dining



Main salon and formal dining



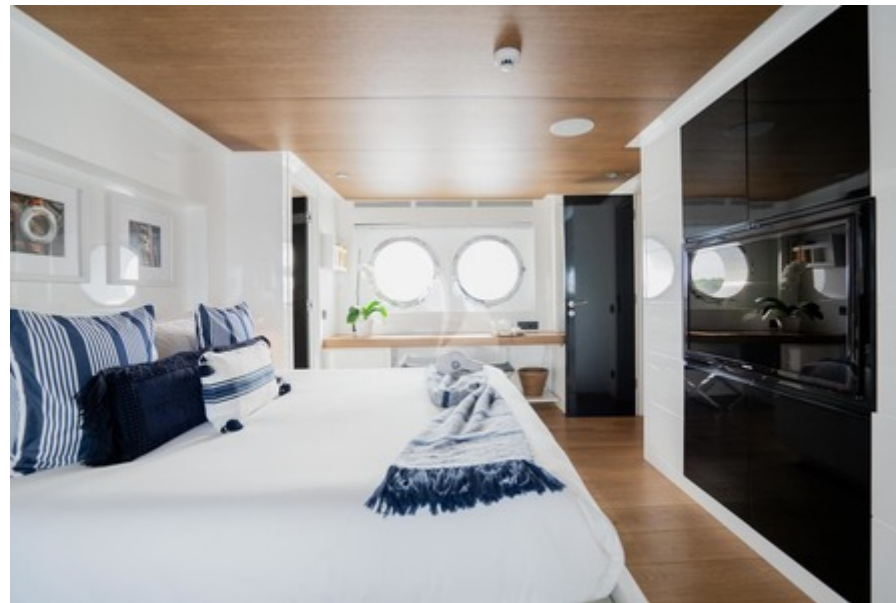
Main salon and formal dining



Master cabin



Master cabin



Master cabin



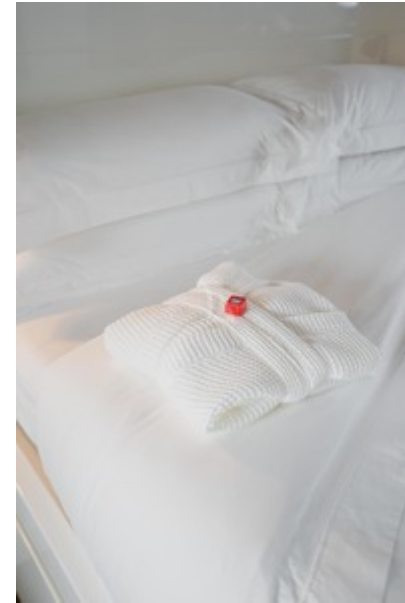
Master cabin



Master bathroom



Tea



Bed detail



Guest cabin



Guest cabin



Twin cabin



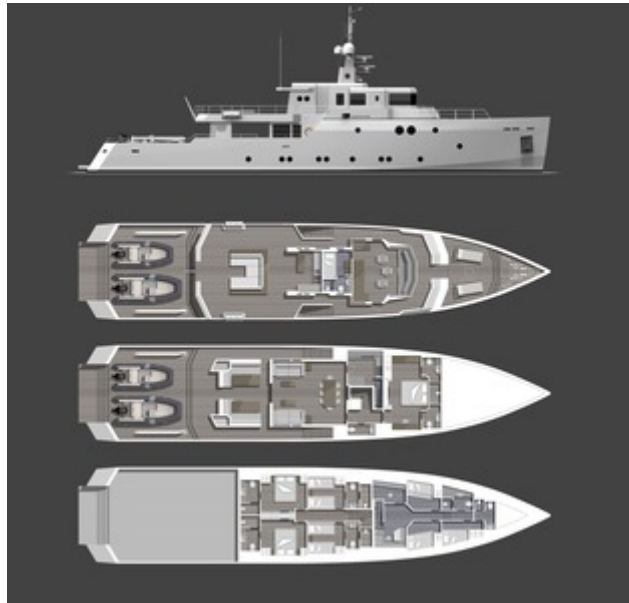
Guest bathroom



Bridge



Bridge



General arrangement

SPECIFICATIONS

ACCOMMODATION

Number of Guests: 10

Number of Cabins: 5

Cabin Configuration: 3 Double, 2 Twin

Bed Configuration: 1 Queen, 2 Double, 4 Single

EQUIPMENT

Engines: 2 x Caterpillar C32 / 1940 hp

Generators: 2 x Northern Lights 50 kW

Cruising Speed: 12 knots

WATERSPORTS

Tenders + Toys: Gala Viking V650 (6.5m) tender with

Yamaha 175HP (seats 12)

2 x Yamaha VX Cruiser waverunners

2 x Seabob F5

2 x GoCycles (available upon request)

1 x Nautibuoy (inflatable platform / waverunner dock)

Water skis (adult and junior)

Wakeboards

2 x inflatable paddle boards

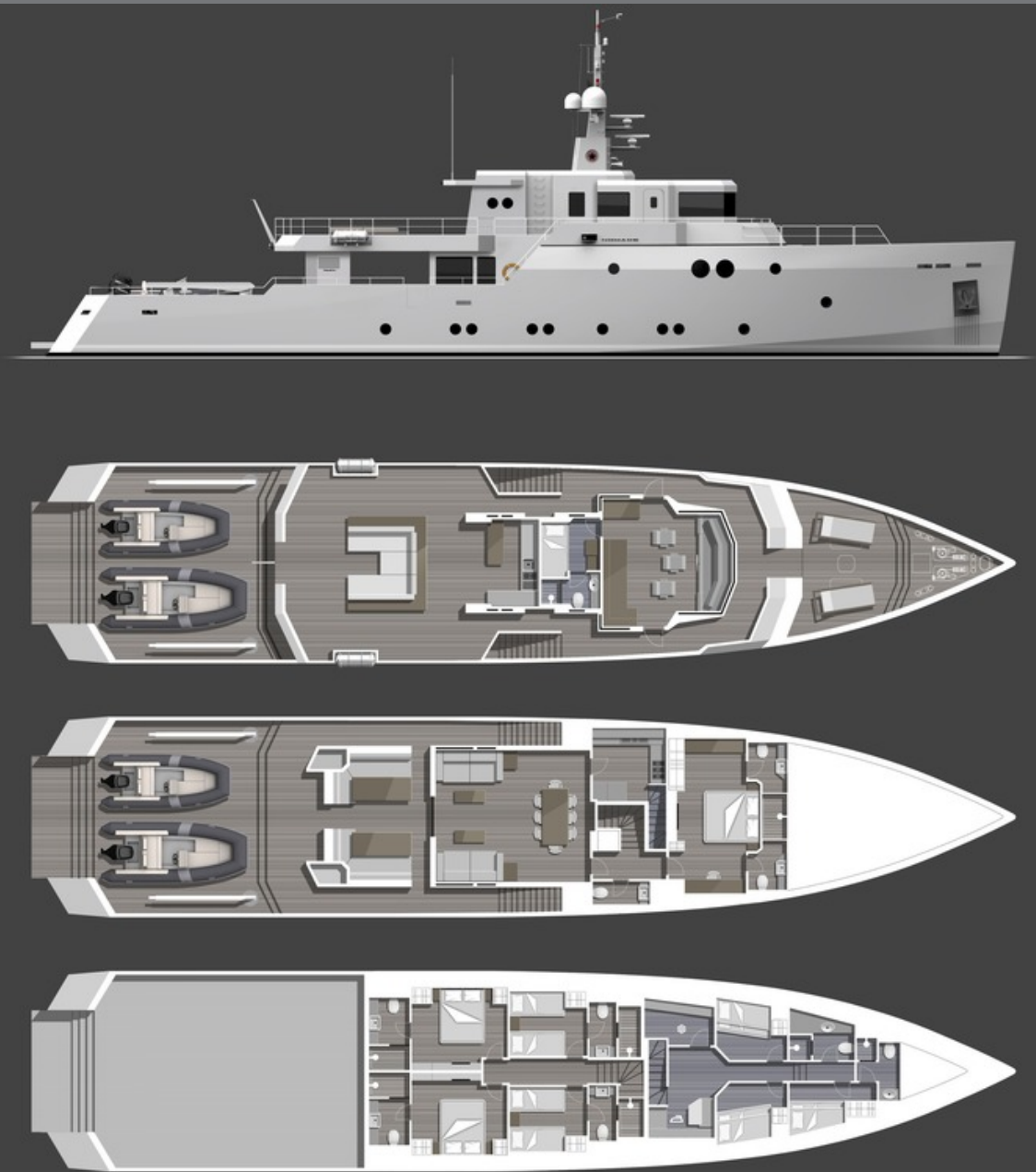
Inflatable towable toys (donuts etc)

Golf mat, clubs & fish food golf balls

Snorkelling equipment

Fishing equipment

LAYOUT



Disclaimer

This document is not contractual. All specifications are given in good faith and offered for informational purposes only. The publisher and company do not warrant or assume any legal liability or responsibility for the accuracy, completeness, or usefulness of any information and/or images displayed. Yacht inventory, specifications and charter prices are subject to change without prior notice. None of the text and/or images used in this brochure may be reproduced without written consent from the publisher.